

The landmark 1st Segmenting Symposium in November 2008 was a resounding success. From that humble beginning of approximately 100 attendees, segmentedwoodturners.org was born. As a chapter of the American Association of Woodturners, the club – with members from around the world – has become the driving force in segmented woodturning.

Now is your opportunity to be a part of another great event dedicated solely to segmenting. Set among the splendor that is the Great Smoky Mountains, Arrowmont is a nationally renowned center of contemporary arts and crafts education. Join us there for three days of "Exploring More Possibilities" ...

# 2nd segmenting symposium

November 11-14, 2010

**Act Today ...**  
Attendance is limited, on a first-come, first served basis.



## who should attend

From novice to accomplished, everyone interested in segmenting is welcome and will benefit.

## demonstrators

Jerry Bennett, Andy Chen, Dennis Daudelin, Jamie Donaldson, Kurt Hertzog, Lloyd Johnson, Bill Kandler, Dennis Keeling, Jim Rodgers, Bill Smith, Curt Theobald, Malcolm Tibbetts, Dale Zimmerman

## location

Arrowmont School of Arts and Crafts  
Gatlinburg TN

[arrowmont.org](http://arrowmont.org)

## not convinced?

Enjoy this video from the 1st segmenting symposium ...  
[http://www.youtube.com/watch?v=fqGPAb4DL\\_k](http://www.youtube.com/watch?v=fqGPAb4DL_k)



## event pricing

\$245  
nonmembers \$270  
(includes 1-yr membership)

3-day meal plan  
\$150

## rotations

Where to Start, Tips & Tricks, Ribbons, Beyond the Vessel, Small-Scale Turnings, Sculptural Work, Pens, Software Programs to Aid Design, Photography, Glue Technology ...



## membership

Join this virtual online club for inspiration, the forum, members' gallery, tips & tricks, instruction, critiques, newsletter, and more.

[segmentedwoodturners.org](http://segmentedwoodturners.org)



## registration

Visit [segmentedwoodturners.org](http://segmentedwoodturners.org) for online registration.

Registration dates  
Mar 1 - Sep 30, 2010

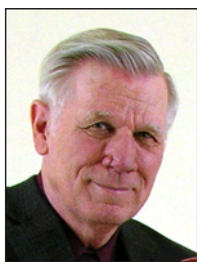
Late registration  
Oct 1, 2010 - add \$50

## event highlights

These artists each are accomplished in their own right and exhibit at a wide variety of prestigious galleries. Please visit their websites to fully appreciate their talent.

### jerry bennett jerrybennettart.com

Jerry has been an artist much of his life and an avid woodturner since 2001. Heavily influenced by glass artists Randy Strong and Lino Tagliapietra, he



brings a fluidity to wood that is possible only by segmenting and subsequent turning on the lathe.

He will be sharing methods and procedures for making his unique sculptures.

#### Why Not Scribble in Wood?

If you can scribble, why not scribble in wood? Learn with this simple process how to make fun, animated, stringed musical pieces, or anything scribbly. Pieces discussed - "Serenade," "Opening Act," "Late Night Solo," "Feelin' Those Good Vibrations."



## event pricing

\$245  
nonmembers \$270  
(includes 1-yr membership)  
comprehensive 3-day meal plan  
\$150

#### Capture Fluidity in Wood

See how to make cool open-segmented vessels by aligning the segments instead of staggering them. Strictly for the adventurous at heart. Pieces discussed - "Orange Blandy," "Feelin' Groovy," "Cactus Blossom," "See Oddity." Make art forms that capture fluidity with spindles and carving. Pieces discussed - "The Heretic," "D'Canter Can't."

#### Potpourri

Step into the future and see segmenting methods that are coming over the horizon. Take a look at the Seg-Easy plate for making open-segmented work quick and easy. Wrap it up by foiling the UPS and FedEx shredders with great packaging.

## instant gallery

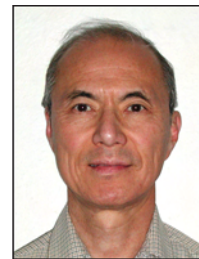
Attendees are invited to bring up to four pieces of their own work for an Instant Gallery. From simple to complex, all skill levels are welcome ... your first piece or your most recent. These three days of workshops are meant to help everyone improve their skills. By collaborating, analyzing mistakes, and celebrating achievements, all attendees will learn from each other and from the demonstrators. The goal? Improve your skills!

- Judging
- Awards

## andy chen

andy\_c\_chen@yahoo.com

Andy began turning seriously in 1992, primarily the segmented variety, because at the time he had only a multi-purpose tool that was too light and



could handle only constructed blanks that were already balanced. His greatest interest still lies in segmented vessels, including Corian that is segmented by necessity.

#### Basic Techniques for Turning Corian

This demonstration covers sources and properties of Corian and other solid surface materials; working characteristics and methods of cutting, sanding, and gluing Corian for projects thicker than 1/2"; and proper turning and finishing techniques.

#### Pattern Design in Corian Turnings

This demonstration will include designing and techniques for constructing patterns, such as feature rings. Because fast-setting CA glue is used for putting segments together or for patterns, standard gluing and clamping techniques are not applicable. Alternate methods are discussed in detail.



### Turning a Staved Vessel in Corian

This session discusses designing, constructing the blank, and turning a vessel with stave construction. Emphasis will be on the delicate operation of ripping staves and cutting veneers.

### dennis daudelin

daudelin.net

Dennis has been turning for 11 years, preferring a wide range of projects derived by spindle, faceplate, segmented turning, and



ornamental turning. During the day, he is a web developer and is one of the co-founders of Woodturning Online. He's the webmaster for both the Segmented Woodturning and Ornamental Woodturning Clubs, both chapters of the AAW.

### Using segmentedwoodturners.org

Forum (logging in, adding an avatar, changing your profile, creating a new thread, responding, adding pictures, editing responses after the fact), Gallery (adding pictures, using the correct category, editing your photo listings, adding a comment to someone else's picture), Links (adding a link to your website), Misc (resizing photos for the web, your own web site).



### jamie donaldson

jamiedonaldsonwoodturner.com

Jamie has become an accomplished turner and has developed a cost-effective method of photographing pieces to show off their beauty. He



shares some great tips & techniques to photographing your work.

### Photographing Your Work

This session is aimed at average "Joe Woodturner" who has some basic photo skills and a digital camera but not a studio full of lighting equipment. Photographing woodturnings is no more complicated than learning the turning process, but some specialized lighting techniques are necessary to accurately present the work. An image of a turning often represents the visual language by which we communicate, and that image must be a literal rendering, with accurate color, dimension, and a sense of reality. To convey the message without distraction, keep things simple - we are not selling a "candlelight halo" of a product in a simulated environment.



### tribute to ray allen



In 1986, after a career in the construction industry, Ray Allen (1930-2000) found a passion for segmented woodturning. As he created his very large and complex Southwest-style vessels, he inspired many woodturners to explore segmenting. Ray's work continues to provide inspiration. At our symposium banquet, we will pay special tribute to Ray with a few of his family members as our guests of honor.

### kurt hertzog

kurthertzog.com

A professional woodturner who enjoys the entire continuum of woodturning, Kurt keeps turnings diverse in an effort to continue exploring the craft



and the medium.

### Basic Pen Turning

Take your segmented turning skills into the arena of pens and other spindle turnings. We'll cover the special needs of segmented blank creation as it applies to pens, pencils, finials, and other slender, long turnings. Learn the pen making fundamentals, including drilling, tube systems, mandrels, turning tools and techniques, assembly, durable finishes, and more.



### Advanced Pen Turning

Take the fundamentals of segmented pen turning to a higher level by building on the basic pen turning class. We'll expand on special finishes, precision fitting techniques, turning tips and tricks, unique presentation and desk sets, and "kitless" pens created by turning your own custom parts. Prior pen turning experience or the basic pen turning class is highly recommended.

### Ornaments from Simple to Sophisticated

Explore a whole new arena with your segmented turning. Learn the special requirements of blanks as used for ornaments along with the design, work-holding, hollowing, assembly, finishing, and presentation of ornaments. Special focus will be given to the techniques and tools required to turn slender, delicate finials.

## lloyd johnson

woodturnerpro.com

With a career in running software companies, it was only natural that Lloyd would apply his love of technology to woodturning. He will present ways



to use technology on the computer and in the shop to design and build complex segmented vessels and sculptures.

### Advanced Sketch-up for Designing Segmented Sculptures

Ways to turn ideas into sketches that will then be transformed into extremely detailed shop drawings.



### Building a Segmented Sculpture

Different options and techniques to create components for segmented sculptures. Ideas for assembling the components into the final sculpture.

## bill kandler

segmentedturning.com

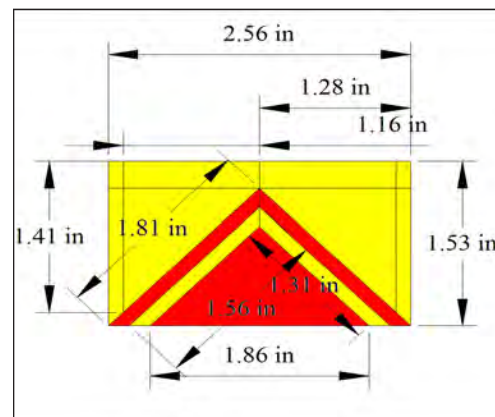
Bill began segmented turning almost by accident in 2000 while reading the user's manual for his shiny new Craftsman lathe.



Now - like most segmenters - he takes perfectly good planks and cuts them up into little pieces that he glues back together.

### Designing a Segmented Project

A successful segmented project is a combination of shape, joinery, and consistent grain orientation, with a little decoration thrown in. We'll explore achieving a pleasing shape and then show several choices in adornments and decorations that can add another notch of pleasure in your designs.



### Feature Ring 1: How to Build It

The puzzle to be solved in a segmented project often is how to tackle construction of the feature ring. The presentation will give you the tools to figure out how to do the construction. We'll step our way through four simple designs and point out the gotcha's and the oh my's. Designs will include dot-to-dot, mosaics, vertical laminations, and altered diamond structures.

### Feature Ring 2: More How to Build It

Using "Feature 1" as a spring board, we'll launch into the construction of four more difficult designs. These will include diamonds & zigzags, stacked sawings, landscapes, and cookie log & Tunbridge.

not convinced?

Enjoy this video from the 1st segmenting symposium ...  
[http://www.youtube.com/watch?v=fqGPaB4DL\\_k](http://www.youtube.com/watch?v=fqGPaB4DL_k)

## registration

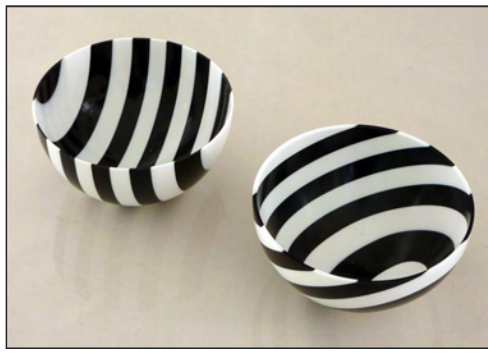
Visit [segmentedwoodturners.org](http://segmentedwoodturners.org) for online registration.

Registration dates  
 Mar 1 - Sep 30, 2010

Late registration  
 Oct 1, 2010 - add \$50

dennis keeling  
dkeeling.com

Based in England, Dennis has been turning for 14 years, first as a spare-time amateur and now as a professional turner. He demonstrates throughout the United Kingdom and the U.S.



### Pushing the Boundaries of Open Segmented Turning

In moving away from convention, Dennis makes his own segment templates to build structures from 8 to 24 segments. He has used both constant thickness gaps and angular gaps between the segments. He will explain how he makes his own templates and will show the differences the gaps can make. Using video, he will go through the construction of his award-winning candlesticks. He will demonstrate on the lathe how he turns such delicate structures.

### Opening Opportunities with Corian

There is no doubt that contemporary pieces made in Corian have that wow factor that we saw with wood pieces 10 years ago. The techniques for building composite structures in Corian are quite different to building in wood – so, too, are the turning and finishing

techniques. Dennis will explain the different construction methods that he has used to create his contemporary designs. Using video, he will show the build-up process and then demonstrate on the lathe how he turns and finishes his Corian bowls.

jim rodgers  
jlordgers.com

As an instructor based in Northern California, Jim prefers woods native to the Western United States and accented with tropical exotics. As



of February 2010, he had authored six articles about segmented turning for the American Association of Woodturners.

### Making Custom Tools

This session presents a discussion and demonstration of making pyramid tools and tools for parting & deep hollowing. Using O-1 steel in sheet and rod forms, learn how to shape the tool by hand grinding using both angle grinders and 46-grit ceramic grinding wheels. Final polishing and clean up will be done on an 80-grit disc sander. Includes turning and assembling the tool using handmade brass ferrules and hardwood blanks. Get a great polished look with finishing techniques but without the finish.



## what about spouses?

Gatlinburg is known for being a destination for couples and families. There are many quaint, local shopping areas within Gatlinburg itself offering unique shopping in a small town environment. In addition to shopping, many sightseeing opportunities are available, ranging from the Ripley Aquarium to guided tours through the great Smoky Mountains. Below are links to some local attractions.

Ripley's Aquarium of the Smokies  
888-240-1358  
ripleysaquariumofthesmokies.com

Smoky Mountain Winery  
865-436-7551  
888-765-9463  
smokymountainwinery.com

Gatlinburg Aerial Tramway  
865-436-5423  
obergatlinburg.com

Marketplace  
865-436-9620

Mountain Mall  
865-436-5935  
gatlinburg-mountainmall.com

The Village  
865-436-3995  
thevillageshops.com

Gatlinburg Tourism  
gatlinburg.com

### Building & Turning Transitional Vessels

Transitional segmented vessels are solid wood hollow vessels with one segmented feature ring. They are quick, easy, and consume your scrap pile. This session includes building the vessel using scrap burl and hardwoods, turning using a two-face plate method, and completion using vacuum chucking. Learn how to harvest four vessels from a single feature ring.



### bill smith smithart.us

Open segmenting is its own challenge, and Bill finds great appeal in the geometrical patterns afforded by segmented construction.



### Open Segmenting Basics

Learn everything you need to know to get started in open segmented turning. This session will guide you through a simple project from start to finish, including design, jigs, materials, and turning techniques.

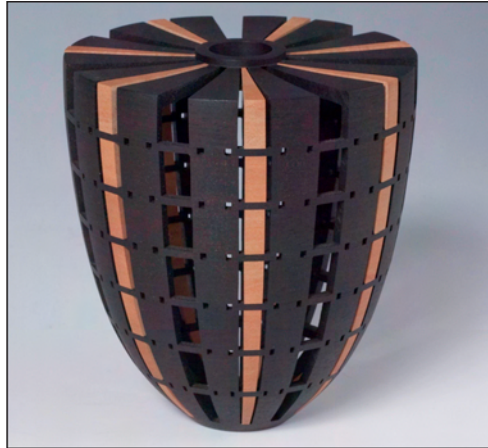
## membership

Join this virtual online club for inspiration, the forum, members' gallery, tips & tricks, instruction, critiques, newsletter, and more.

[segmentedwoodturners.org](http://segmentedwoodturners.org)

### Open Segment Design

This rotation is a survey of advanced design concepts that can be incorporated in open segmented constructed vessels. Learn how to go beyond the basic open segmented spiral. We will cover details of design and construction and will show examples of the results.



### Small Scale Techniques

Vessels less than 6" tend to create a warm and personal relationship with the viewer. In this rotation, we will discuss and demonstrate many of the tools and techniques used to create these small treasures.

### Turning an Orb

The sphere is a shape that always draws attention. Learn to make an open segmented sphere with decorative panels around the center. The open segments come to a point at the bottom center.



## malcolm tibbetts

[tahoeturner.com](http://tahoeturner.com)

Malcolm has become one of the premier segmenters worldwide. By stretching his imagination, he has created an amazing variety of designs and art pieces.



### Tricks and Tips

This will be a wide range of offerings. You'll see various techniques for designing, cutting, sanding, and assembling. In many cases, these will be methods of work that will help produce better quality at faster speeds.

### Ribbon Construction

This session will demonstrate the ribbon creation process from design to finished ribbon, including instruction on compound-mitered stave construction.



### Beyond the Vessel

This session will focus on both the methods of work and sources of inspiration concerning sculptural creation. In addition to techniques such as tubular construction, there will be a discussion of enthusiasm for creating social messages in segmented work.

[segmentedwoodturners.org](http://segmentedwoodturners.org)

## curt theobald

curttheobald.com

Internationally-known, Curt is both artist and instructor. From early childhood, Curt always loved to assemble things.



As a master of joinery and grain alignment, his current body of work utilizes that passion for assembly.

The technical challenges he creates in working from vision to object provide great satisfaction.



### Evolution of Segmented Woodturning

Review the history of segmented woodturning and the impact of segmented turners, both past and contemporary. Attendees will be introduced to the historical forerunners of segmented work, of which many current turners may be unaware. Look at current segmented artists and their contributions to the field, along with discussion of where segmented woodturning may be going in the future.



### Anatomy of a Segmented Pattern

Learn how to accurately plan your own projects before any wood is cut. How to create several patterns that can be used to enhance segmented woodturnings. Many techniques will be shared to help attendees more easily and accurately perform segmented pattern glue-ups in your own workshops.

### Segmenting: Where do you start?

Does segmented turning seem intimidating? Come to this introductory demonstration and learn how to begin. We will cover wood choices, wood movement, planning, and preparation to help you start segmenting wood.

## dale zimmerman

titebond.com

Dale has been employed by Franklin International, the makers of Titebond wood glues, since 1974. He was involved in formulating



various types of adhesives until 1989, but has functioned as a technical specialist since 1990. In addition to his role assisting callers in the selection and use of wood glues and other products, he has been involved in diagnosing gluing problems and has shared his knowledge through other avenues. In that regard, he has consulted on numerous adhesive-related articles and publications, served as a technical advisor to Popular Woodworking Magazine, and made presentations on glues and gluing for several woodworking clubs and other organizations.

### Glue Technology

There is more to learn about segmented turning than simply gluing multiple pieces of wood together. This session will help you better understand the composition, properties, and physics of glue.

There will be an in-depth and informative discussion of this key component in every segmented woodturning.

## who should attend

"I'm interested in segmenting, but I don't know where to start."

"If only I could figure out those darned angles."

"If I could just set the saw correctly."

"I can see the segments, but how can I lay out a design in advance?"

"I've been segmenting for a while, but how in the world did he do THAT!?"

Any of these sound familiar to you? Then you should attend the 2nd Segmenting Symposium. There will be something for everybody, no matter your level of expertise.

## location

Arrowmont School of  
Arts and Crafts  
Gatlinburg TN

[arrowmont.org](http://arrowmont.org)

## on-site lodging

The Red Barn was built in 1923 and served its purpose then as a model barn where boys of the Settlement School were taught the care of livestock. Later, the structure housed the first movie theatre in the Gatlinburg area. In 1959, the barn was renovated into housing for students who attended the summer Craft Workshop. The front half of the hayloft was retained as it originally was built to be used as a lounge called the Owl's Nest. Finally, in 1999, the Red Barn was remodeled once again to accommodate Arrowmont's continuing growth and expansion. The building is still used as housing for students participating in the School's workshops, but the structure has been fortified and upgraded. Not air conditioned. First-floor common area with fireplace and small refrigerator. 2nd-floor common area with fireplace. Offers double, triple, and dormitory-style rooms that accommodate 4-13, all with shared baths.



Built around the turn of the 20th Century, Hughes Hall offers quaint rooms, furnished with antiques. Air conditioned. Common area with TV, refrigerator, screened-in porch. Single, double, and triple rooms with shared baths.

The Arrowmont School of Arts and Crafts, the oldest crafts school in Tennessee, was originally established as a settlement school serving remote mountain communities to provide free education to the Southern Appalachian impoverished. Originally started by the Pi Beta Phi fraternity in 1912, it has been serving the needs of artisans worldwide since 1916. Arrowmont since has been listed on the National Register of Historic Places, becoming a 5-acre complex dedicated to classes in the arts, including ceramics, fibers, metals & jewelry, painting, drawing, photography, warm glass, woodturning & woodworking, sculpture, and book & paper arts.

It is among this setting, nestled in the splendor that is the Smoky Mountains, that segmenters worldwide will gather to pursue their passion.

### Arrowmont Resource Library



## meal plan

The comprehensive 3-day meal plan will be added to your registration for only \$150. Includes all meals (Thursday dinner through Sunday lunch), snacks & coffee throughout the day, Saturday banquet, etc.

## on-site lodging

Cynthia, 865-436-5860  
[cbellacome@arrowmont.org](mailto:cbellacome@arrowmont.org)

- All rates are per person, per day
- Double with shared bath - \$50
  - Single with shared bath - \$65
  - Double with private bath - \$60
  - Single with private bath - \$75

## off-site accommodations

within a half-mile of Arrowmont ...

Best Western Twin Islands  
from \$70/night - 866-925-7881

River Terrace Resort  
from \$49/night - 866-925-9753

Best Western Crossroads Inn  
from \$63/night - 866-538-0154

Howard Johnson Inn  
from \$89/night - 866-538-0293

Edgewater Hotel-Gatlinburg  
from \$100/night - 866-538-1349