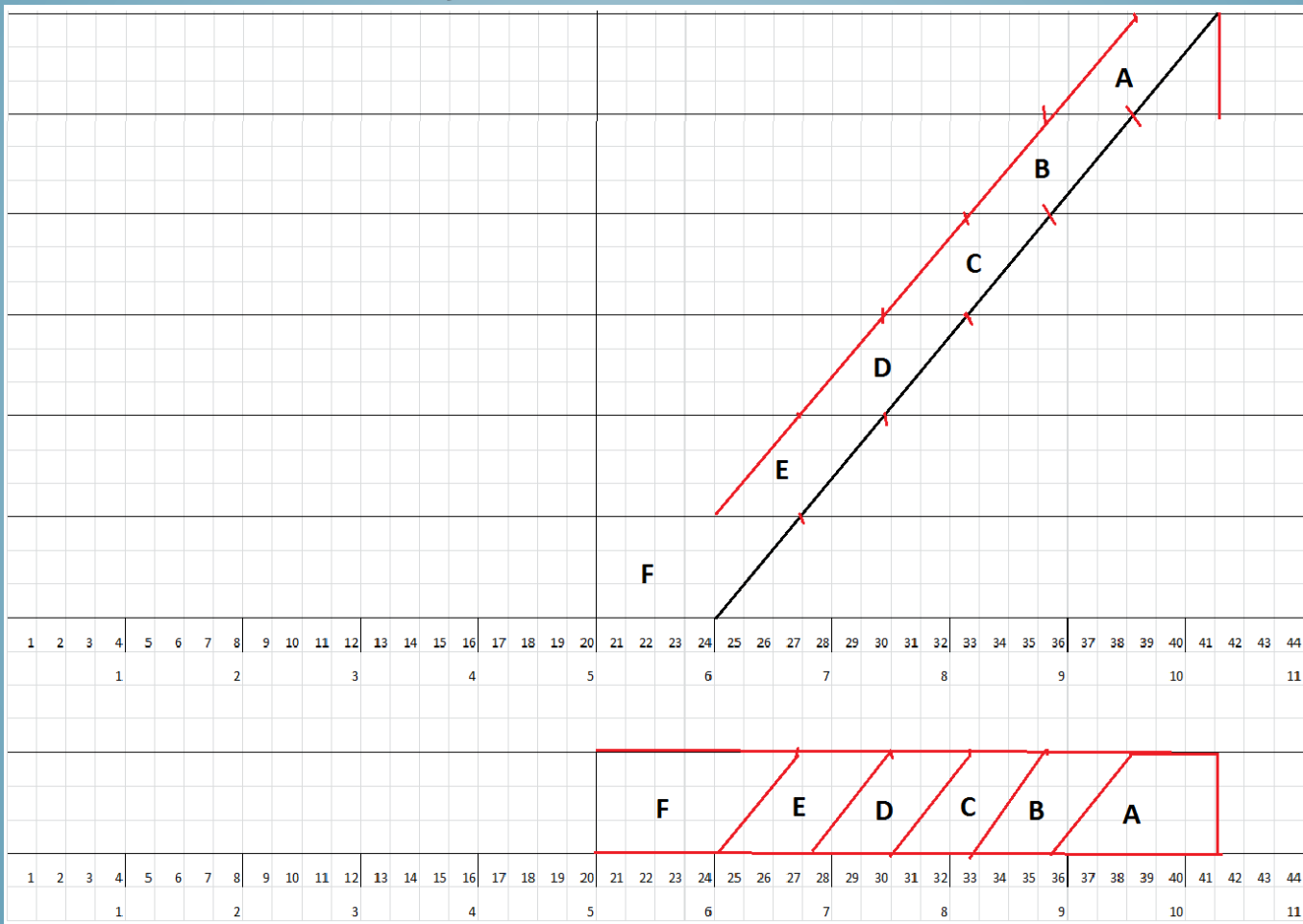


Bowl From A Board

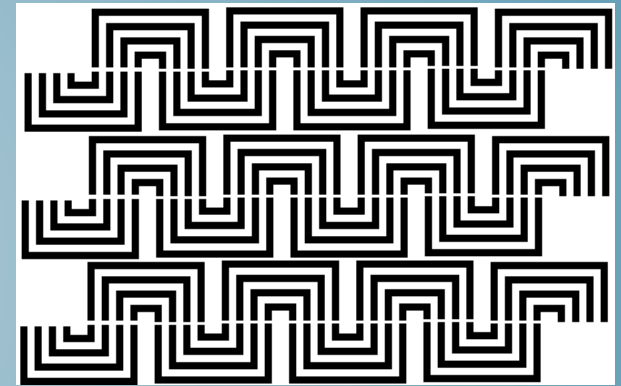
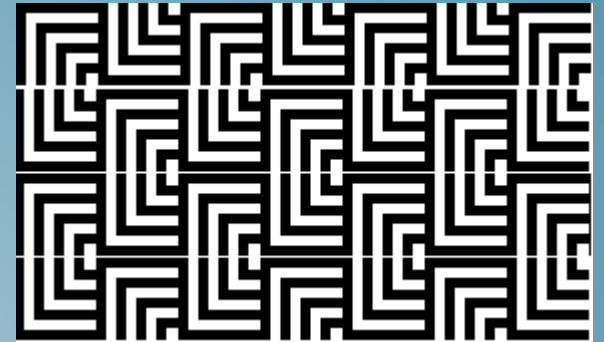
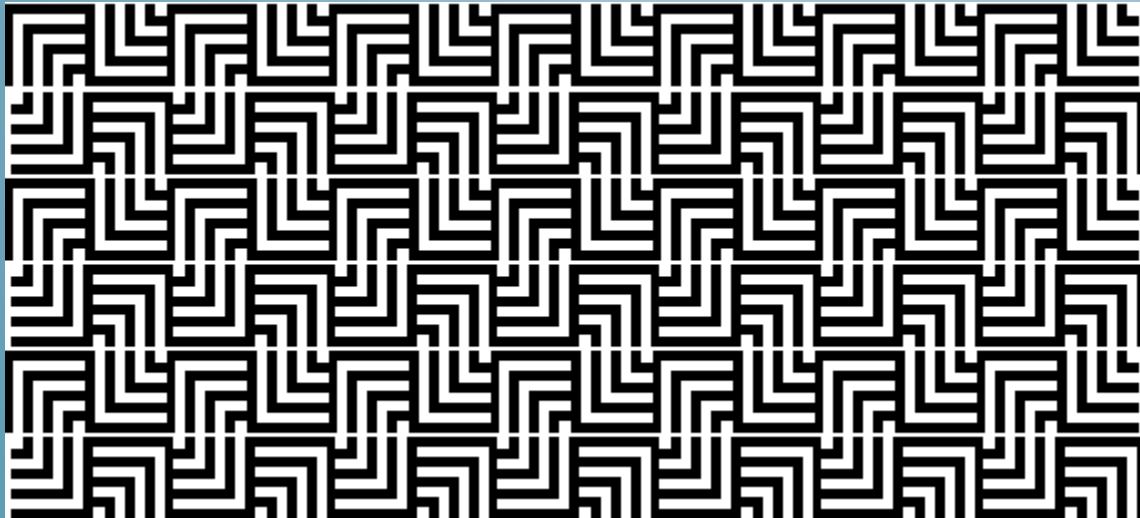
Beyond the Basics



Zig-Zag



Design



Cut and Sand the Strips



Glue Strips



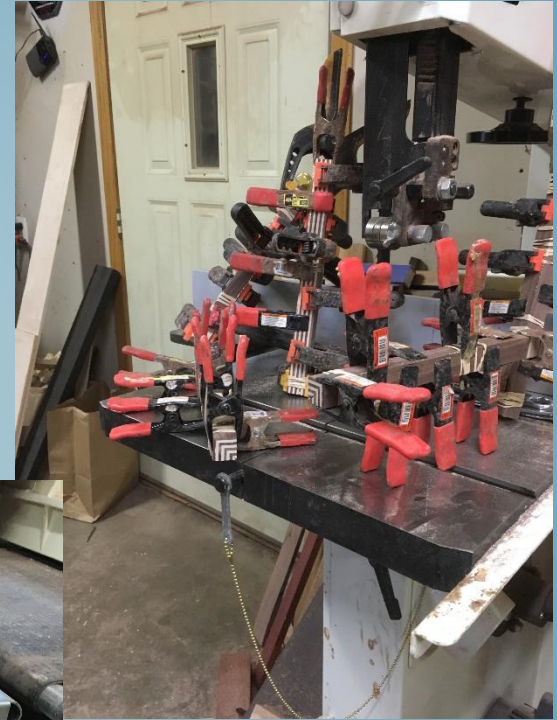
Sand Glued Strip Bundles



Cut at 45° Strip Bundles



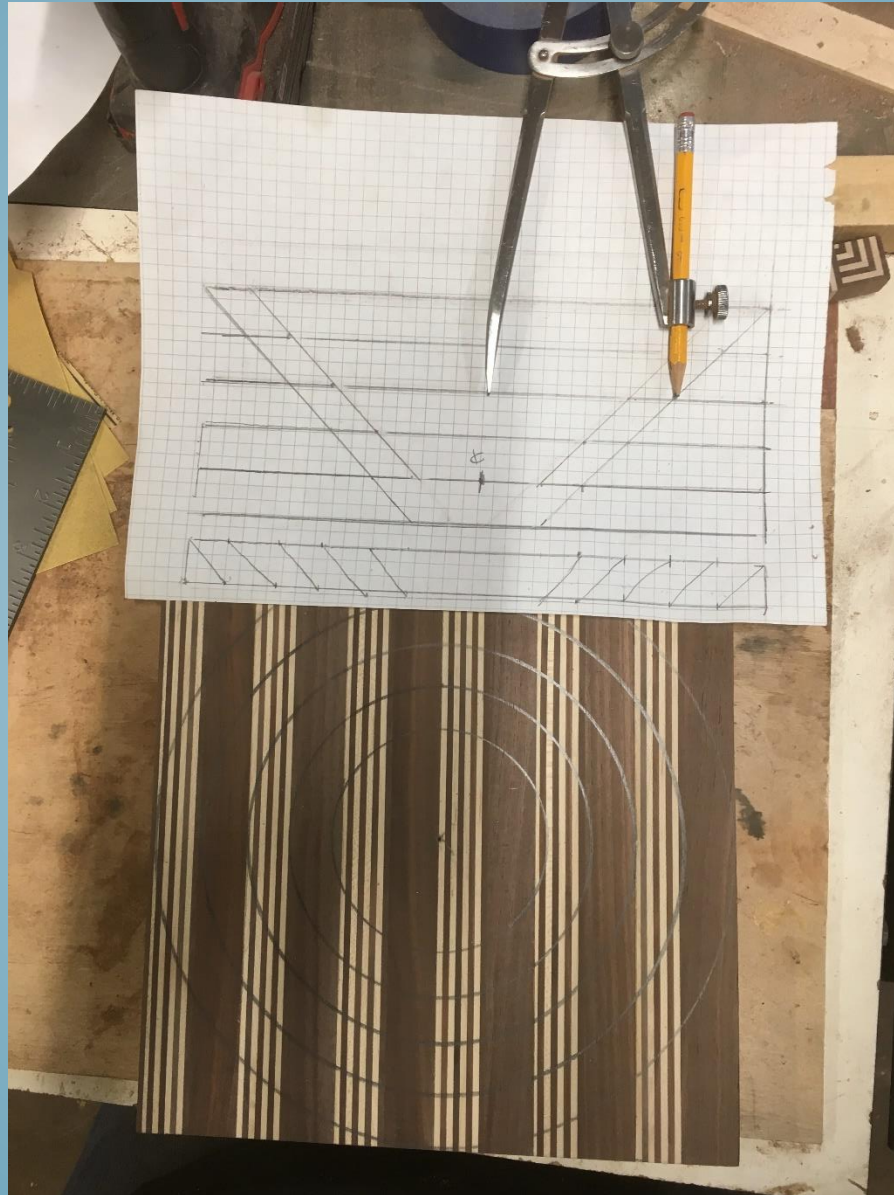
Glue 45° Cuts Piece Together



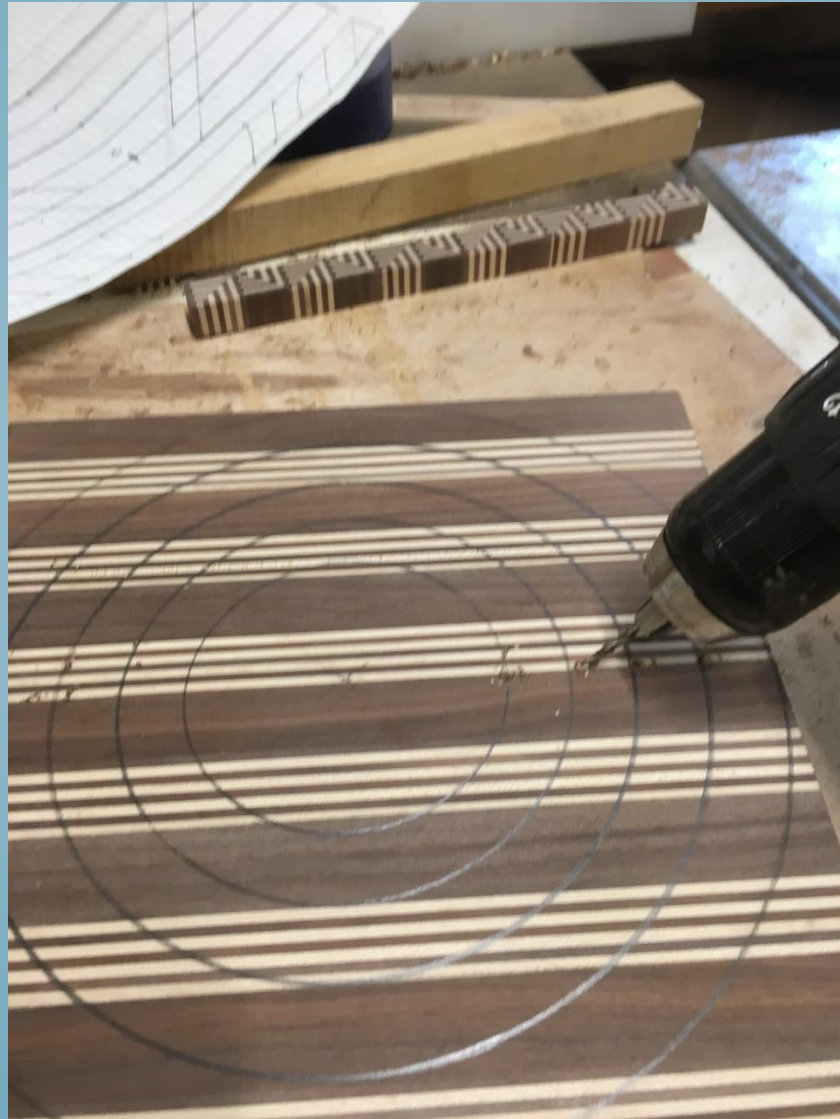
Glue and Sand Bundles Together



Design Bowl Elevation & Transfer to Board



Drill Holes For Scroll Saw Blade, at 45°



Cut Out Each Row @ 45°



Check Row Alignment



Glue First Row



Continue to Glue Rows Together



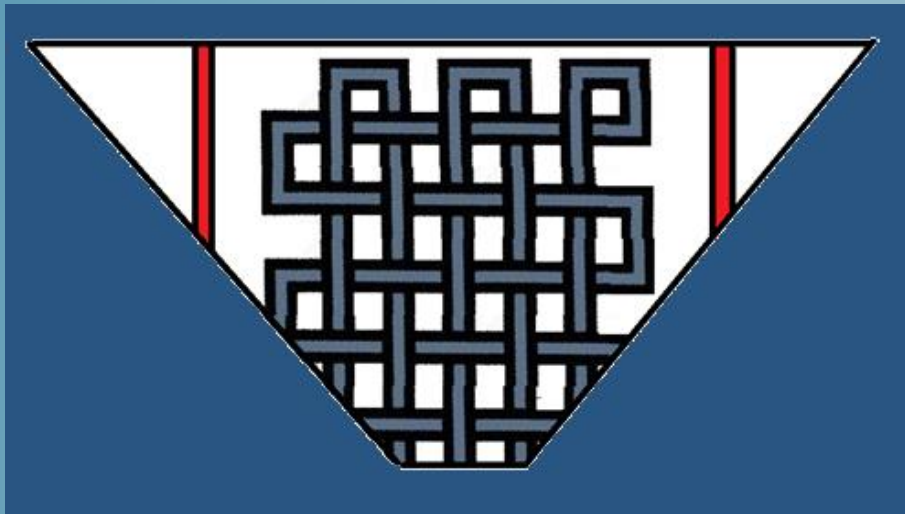
Lathe Work



Finish Work

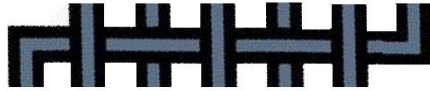


Loop



Loop Design

Board A



Board B



Each strip is 1/8" wide



3/4" high, 3/8" wide
X 3 for board A
X 2 for board B

1 1/8" wide, 3/8" high

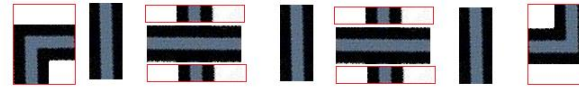
X 2 for board A
X 3 for board B



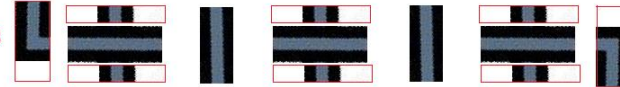
X 3 for board A
X 3 for board B (on top of board only)



Board A



Board B



1 1/8" wide
3/16" high



X 4 for board A
X 6 for board B

3/4" wide
3/4" high

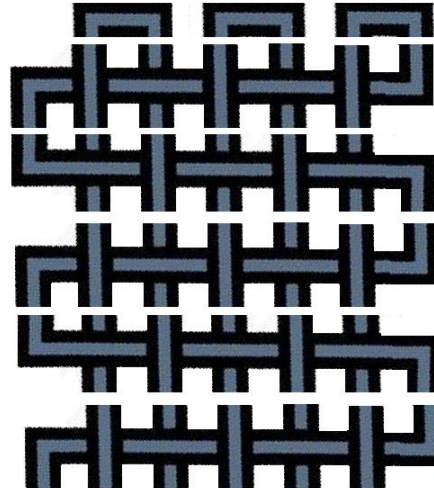
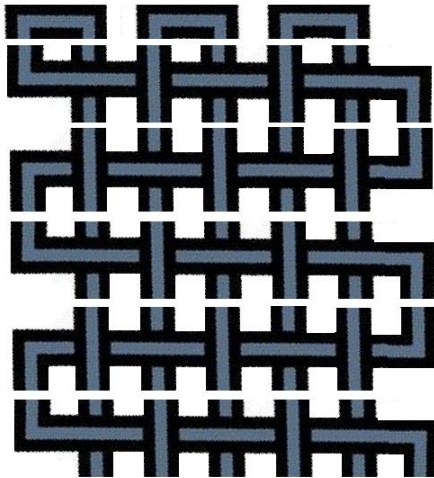


X 2 for board A

3/4" high
3/8" wide



X 2 for board B



Glue The Pieces Together



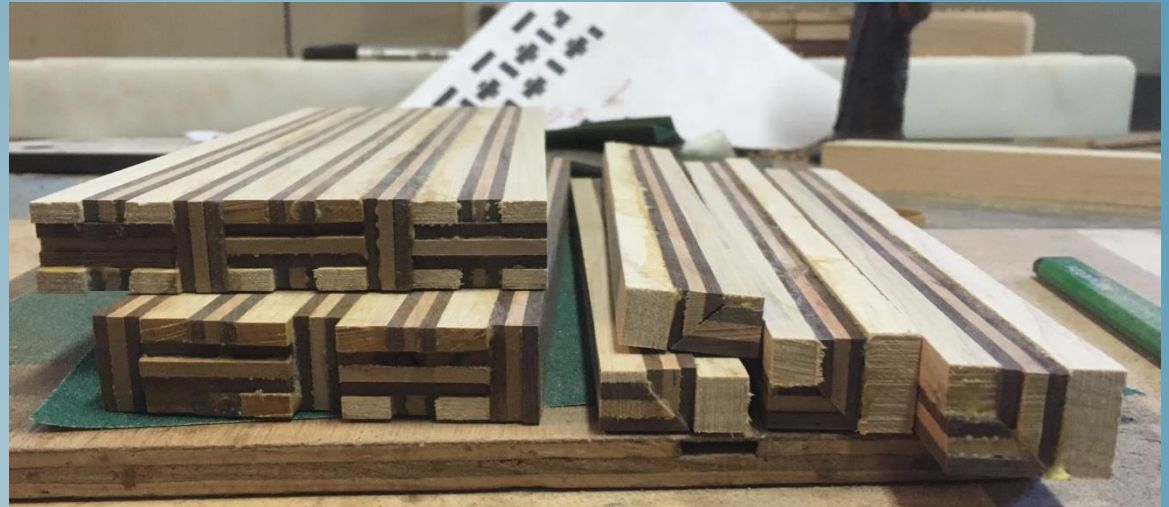
Glue & Cut to Size



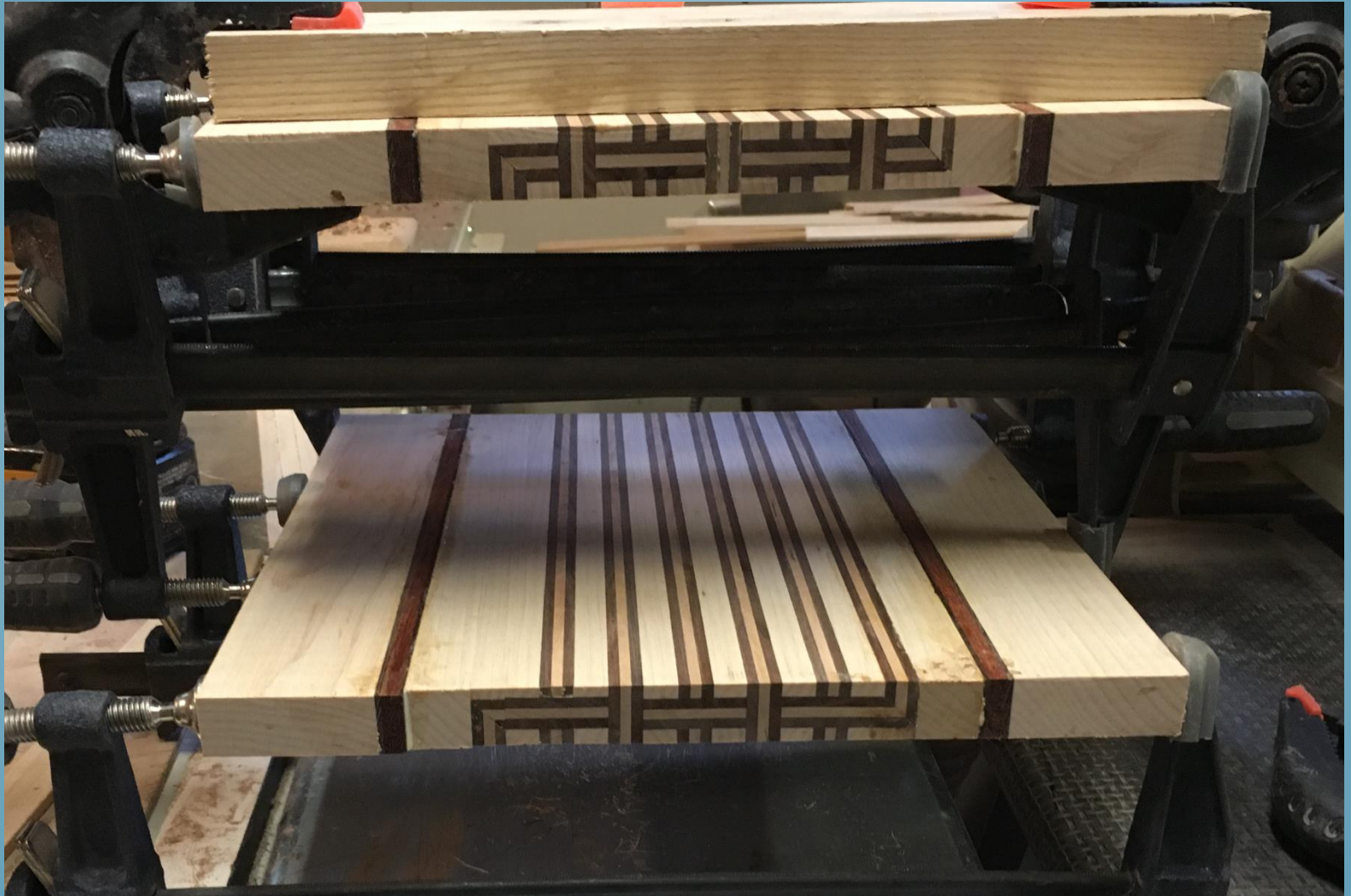
Cut and Glue Corners



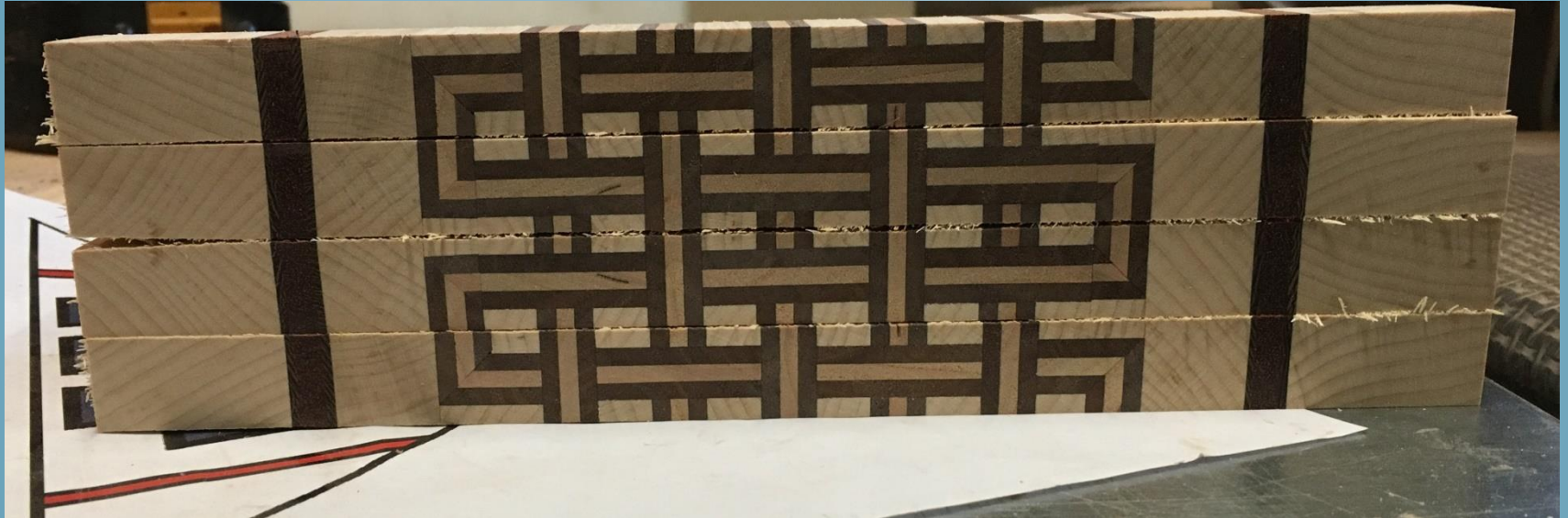
Put the Pieces Together



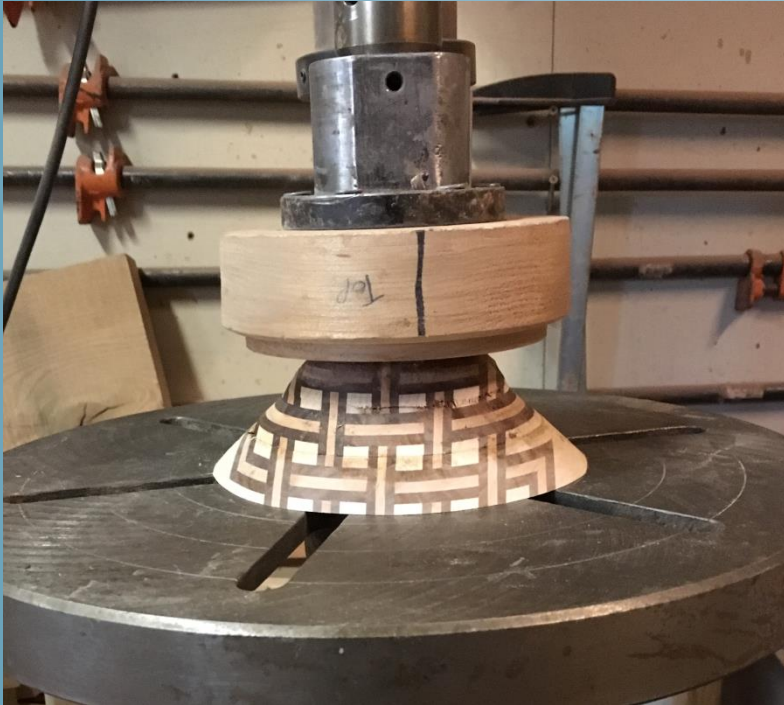
Glue Up The Boards



Check To See If It Will Work



Cut Out Rings And Glue Up



Glue Up Top Row Caps



First Try, not so Good



Second Try



Second Try



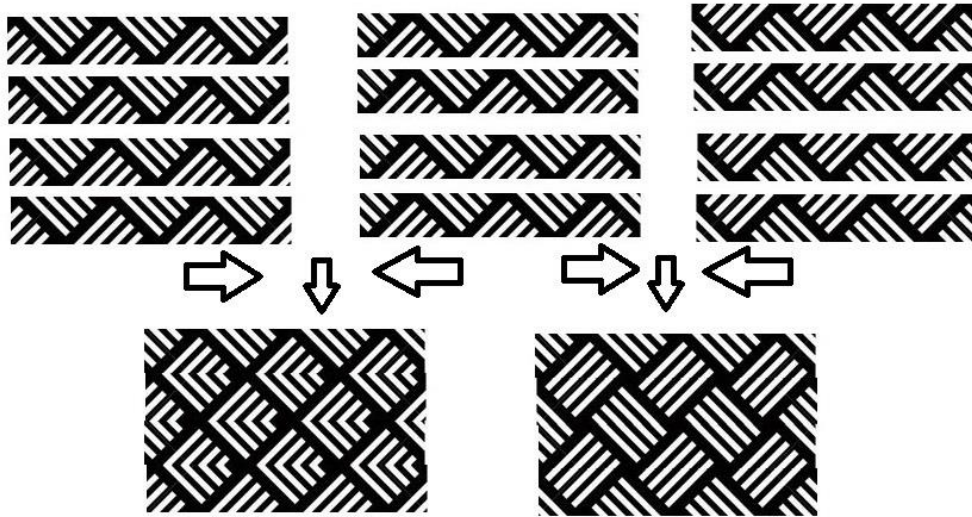
Second Try A Little Better



V-Basket

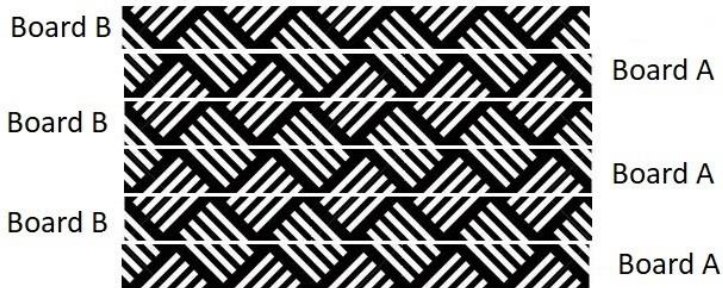


Design

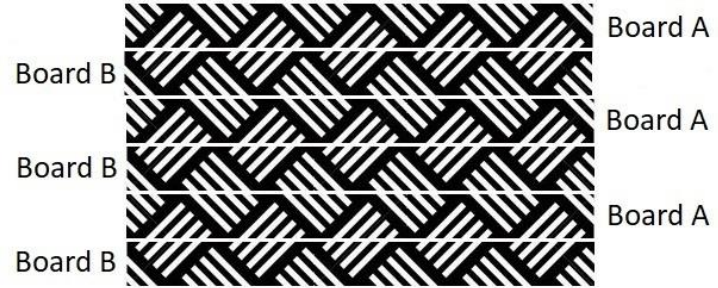


Board A and Board B are the same board, just flipped vertical and horizontal.

Bowl A



Bowl B



Cut and Sand Strips



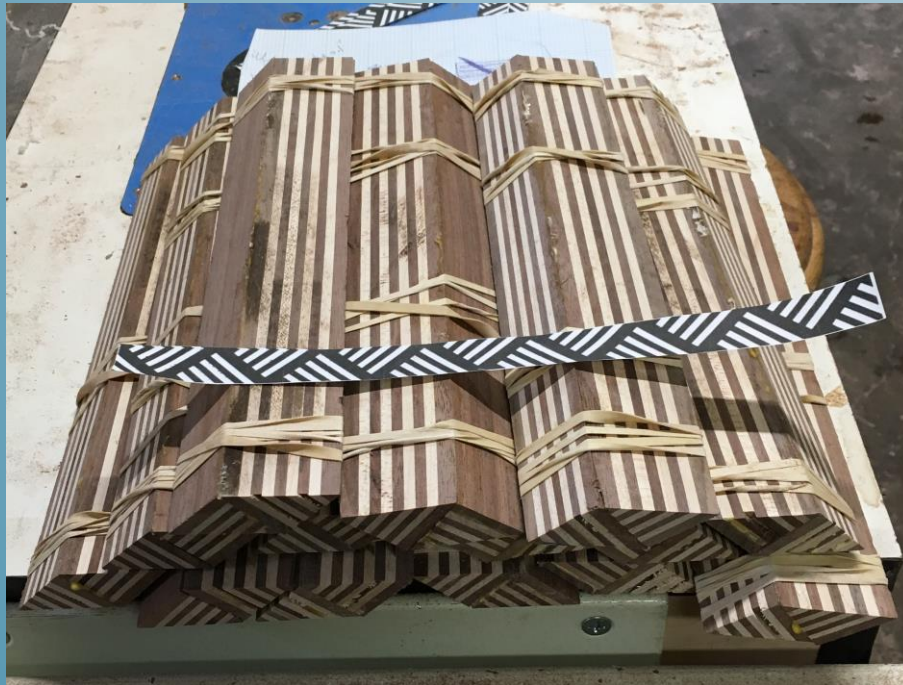
Glue Strips in Bundles



Clean Bundles



Cut Bundles @ 45 degrees and Glue



Bundles Cleaned Up



Glue Bundles into Pairs



Bundled Pairs Cleaned Up



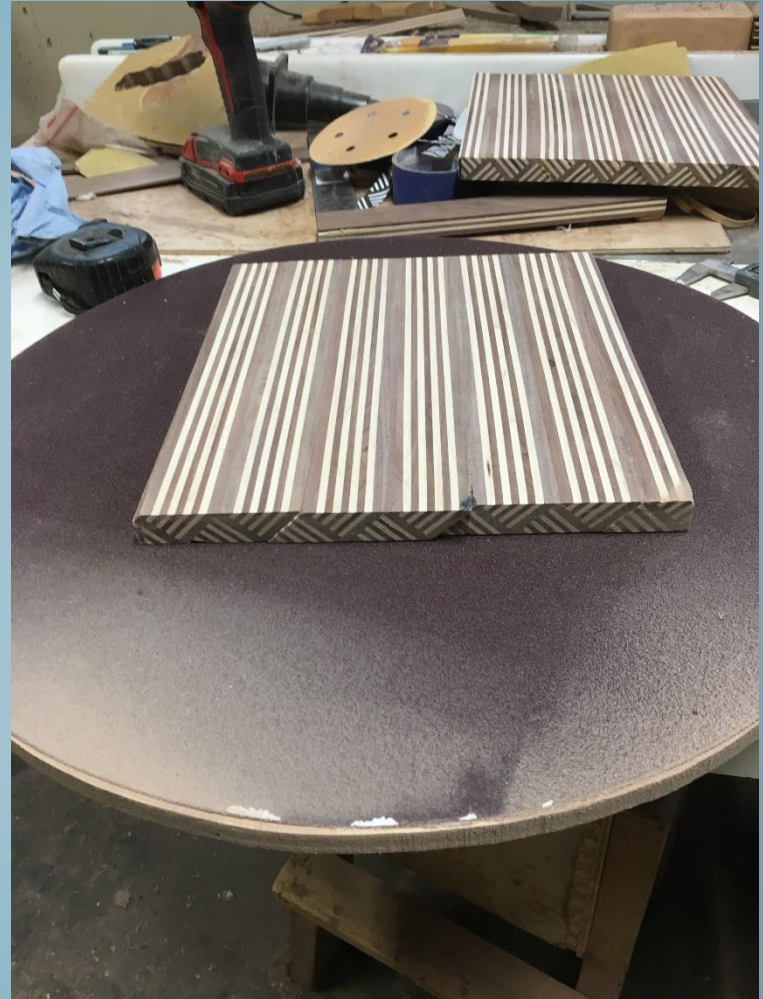
Glue Pairs Together



Boards Glued Up



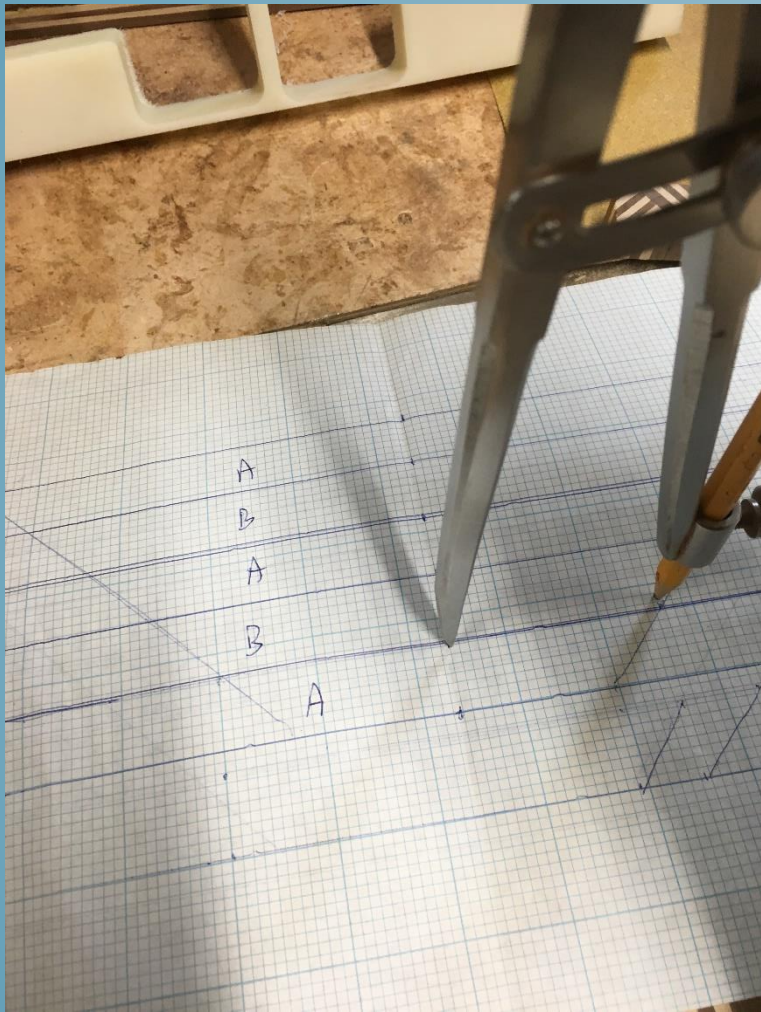
Clean Up Boards



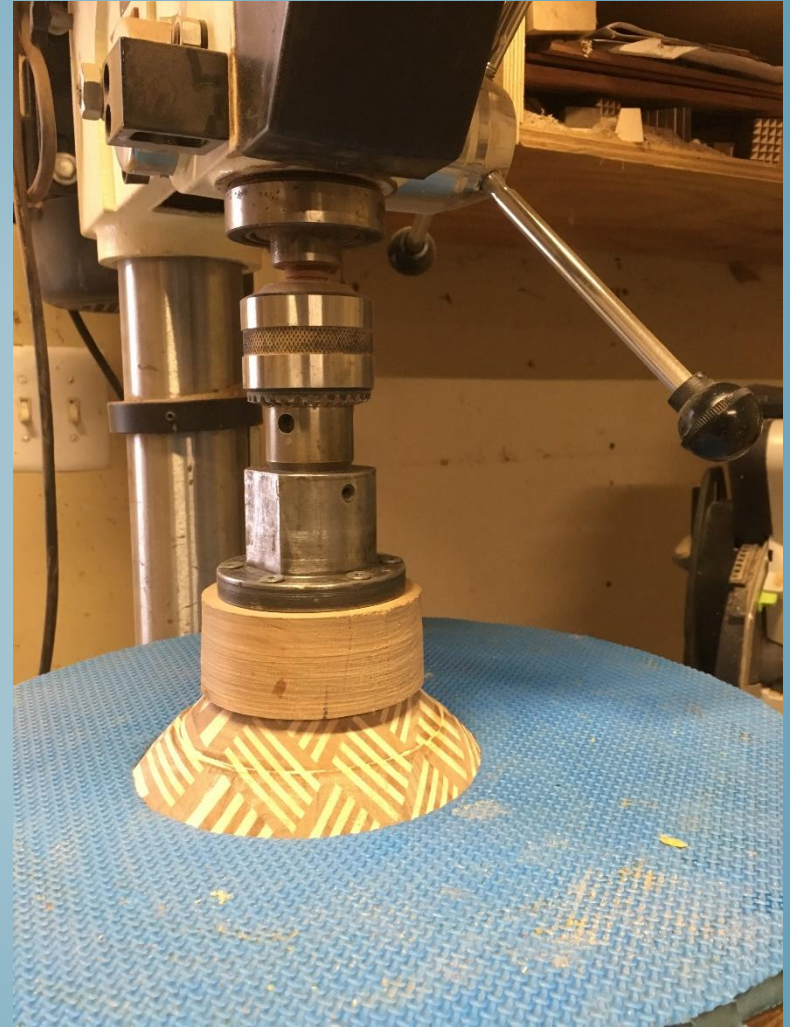
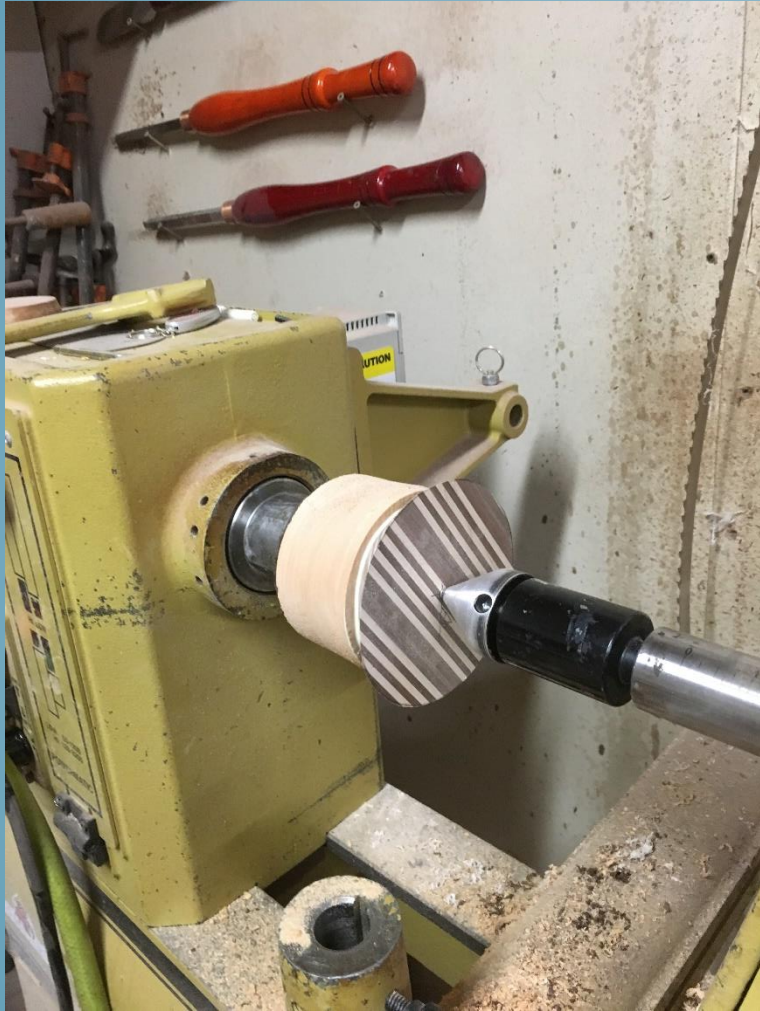
Bad News – Lineup is Bad



Keep Going Forward



Glue Rows On



Glue Rows On



Final Row On



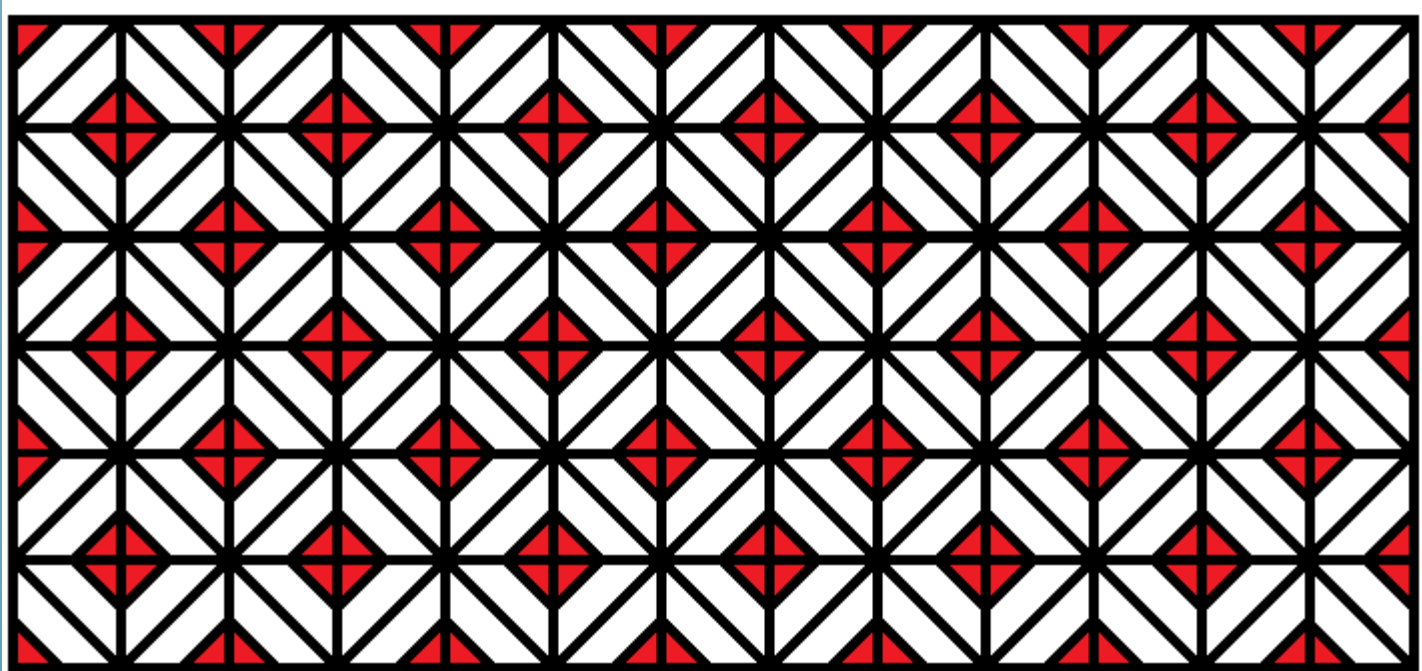
Well That Stinks!



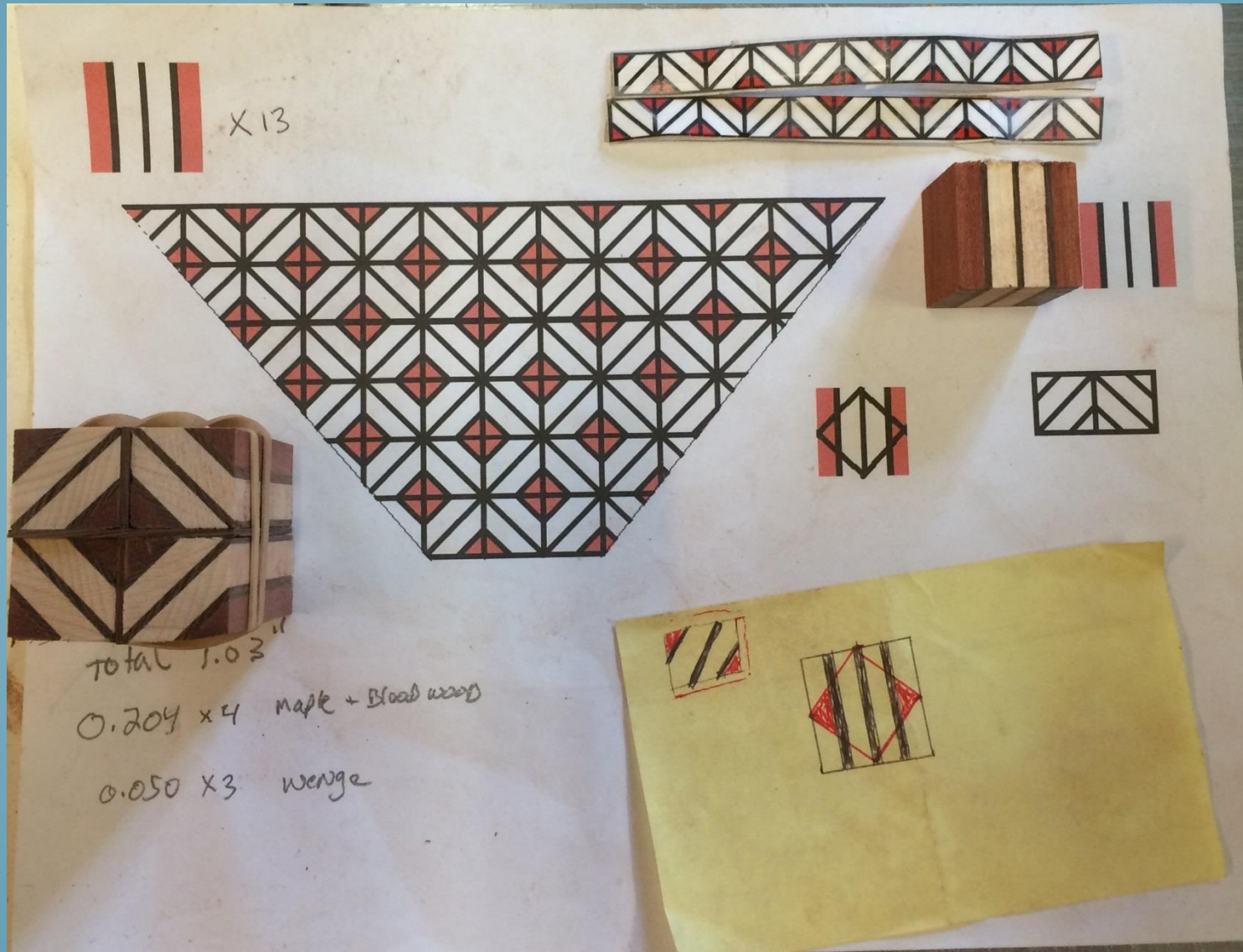
Black & White & Red All Over



Breaking Down The Pieces



Start With A Plan



Cut the Strips



The Strips



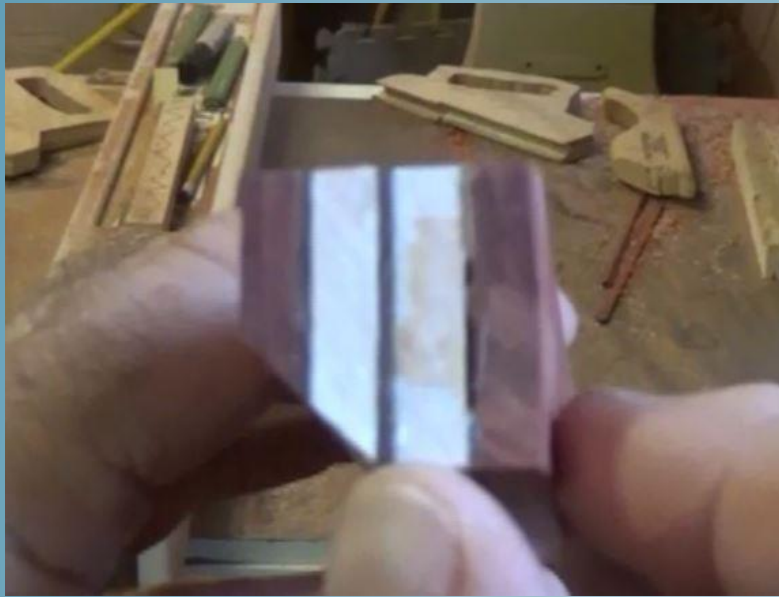
Glue the Strips Together



Strips Glued



Cut Off Corners From Strips



Test for Alignment



Glue Up Pairs



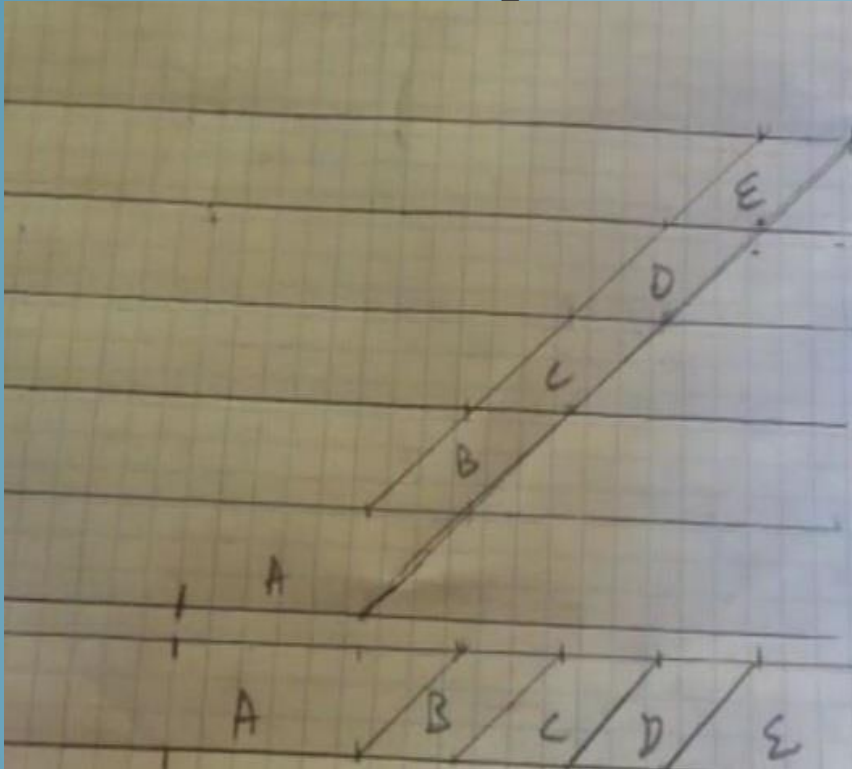
Glue Pairs Together



Glue Row Spacer On



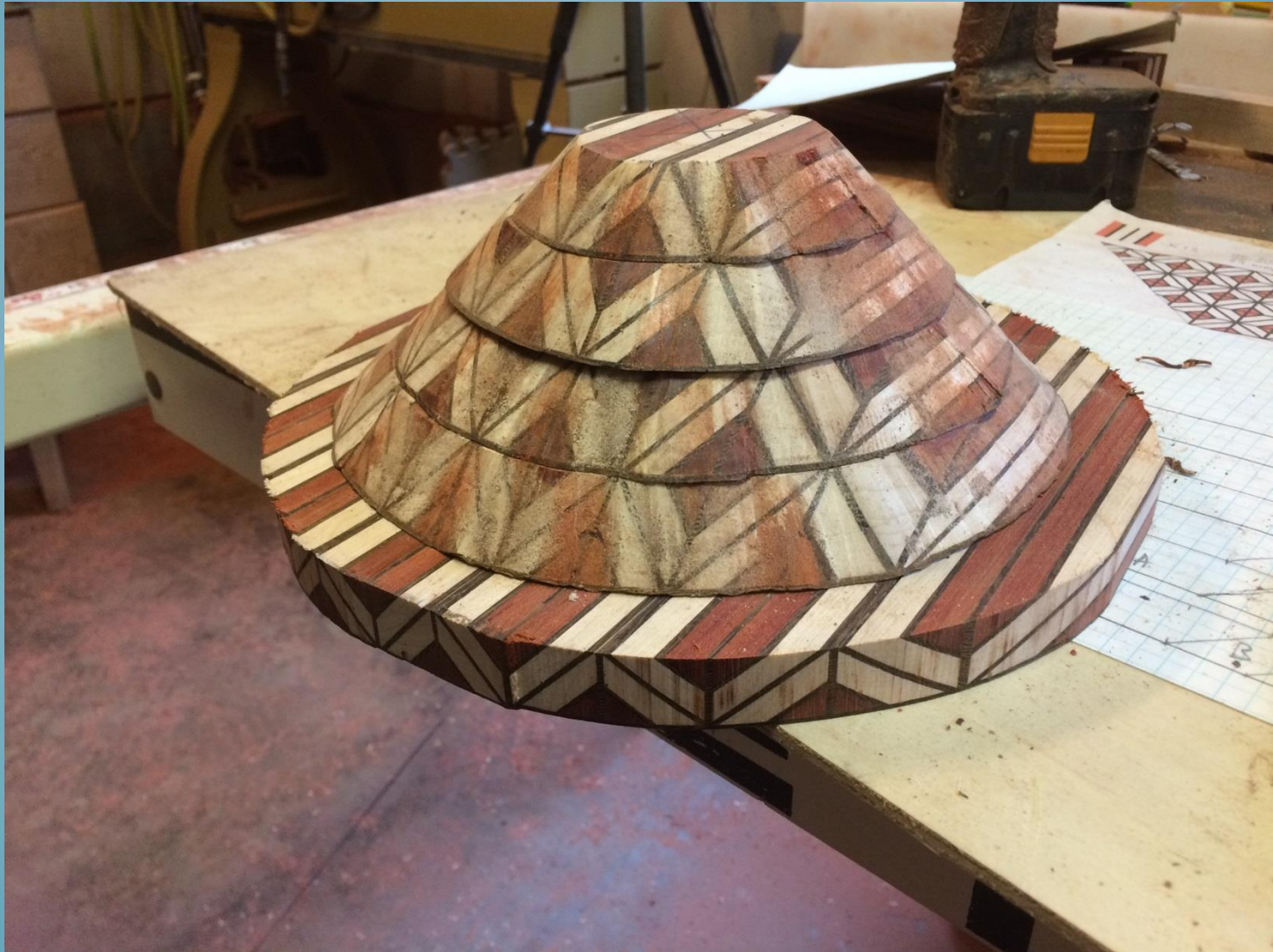
Layout Board Rows



Cut Out Rows



Check for Alignment



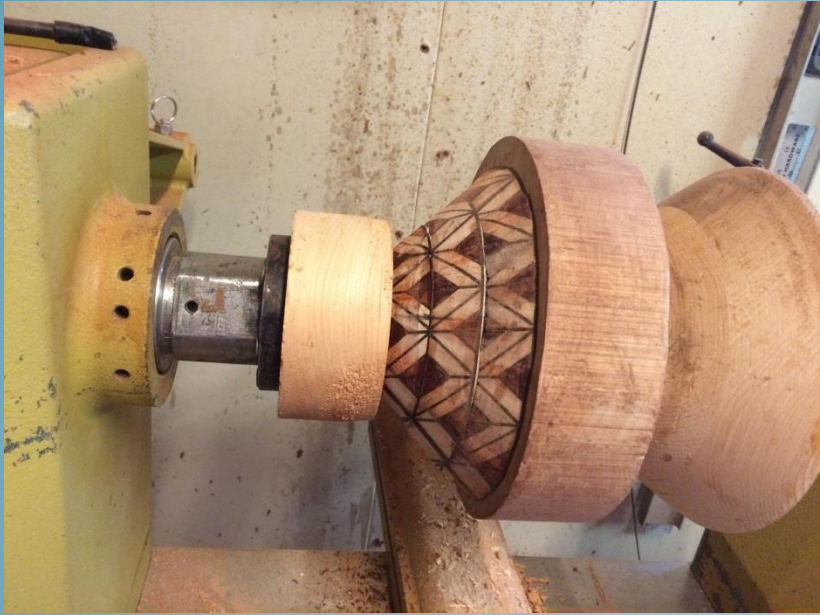
Glue Row On



Glue Rows



Glue Rows



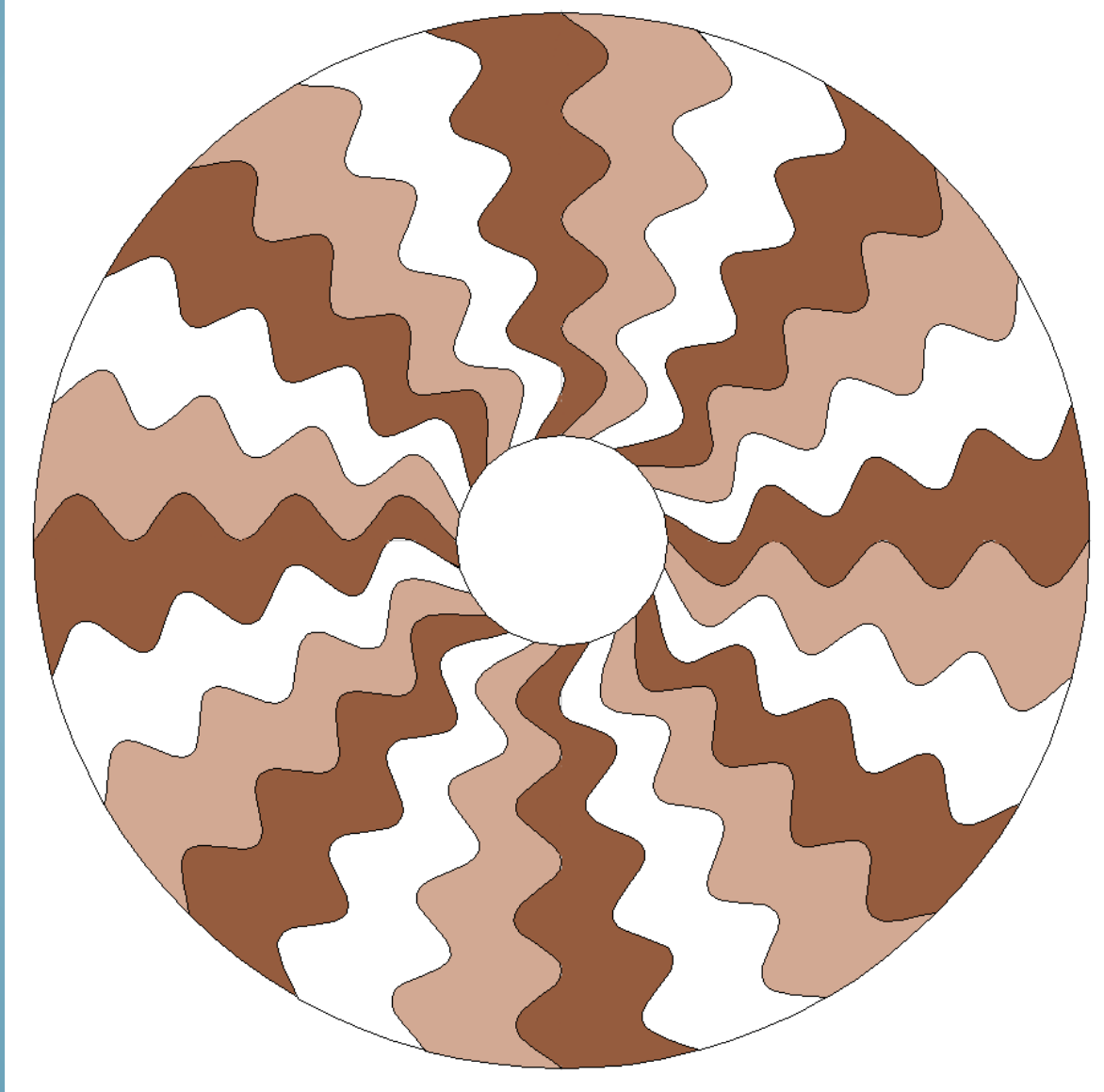
Finally, Lathe Time



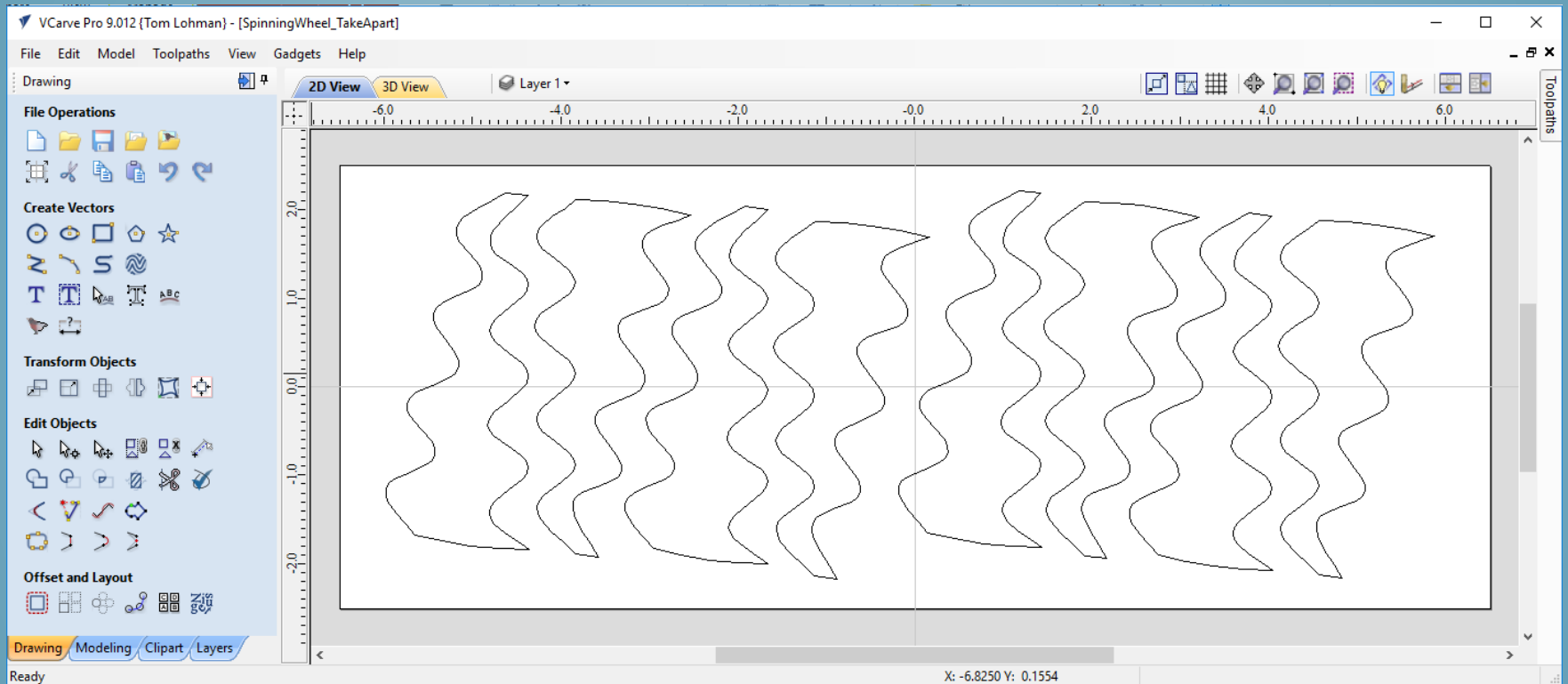
Complete



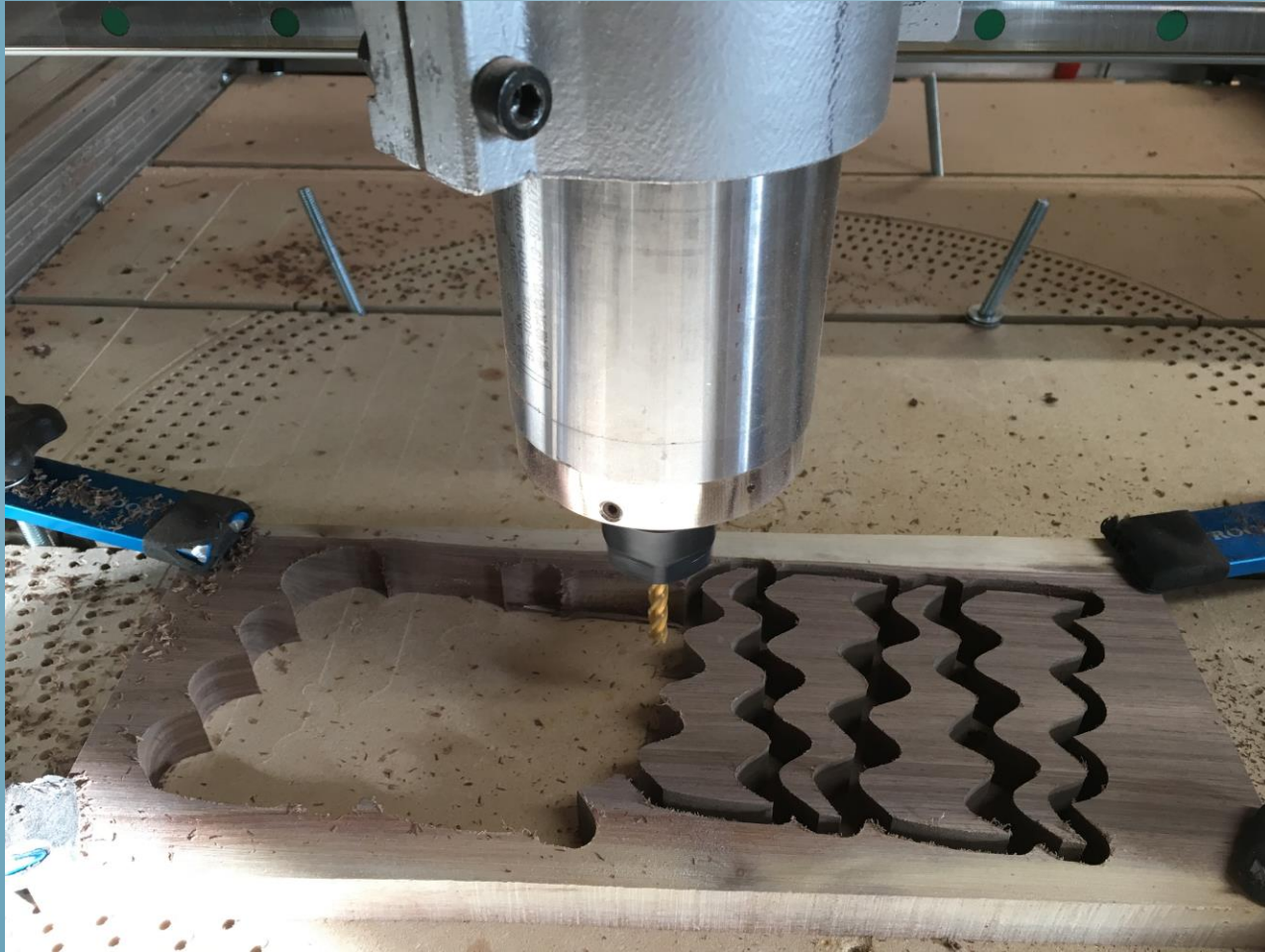
Waves



Waves - Designs



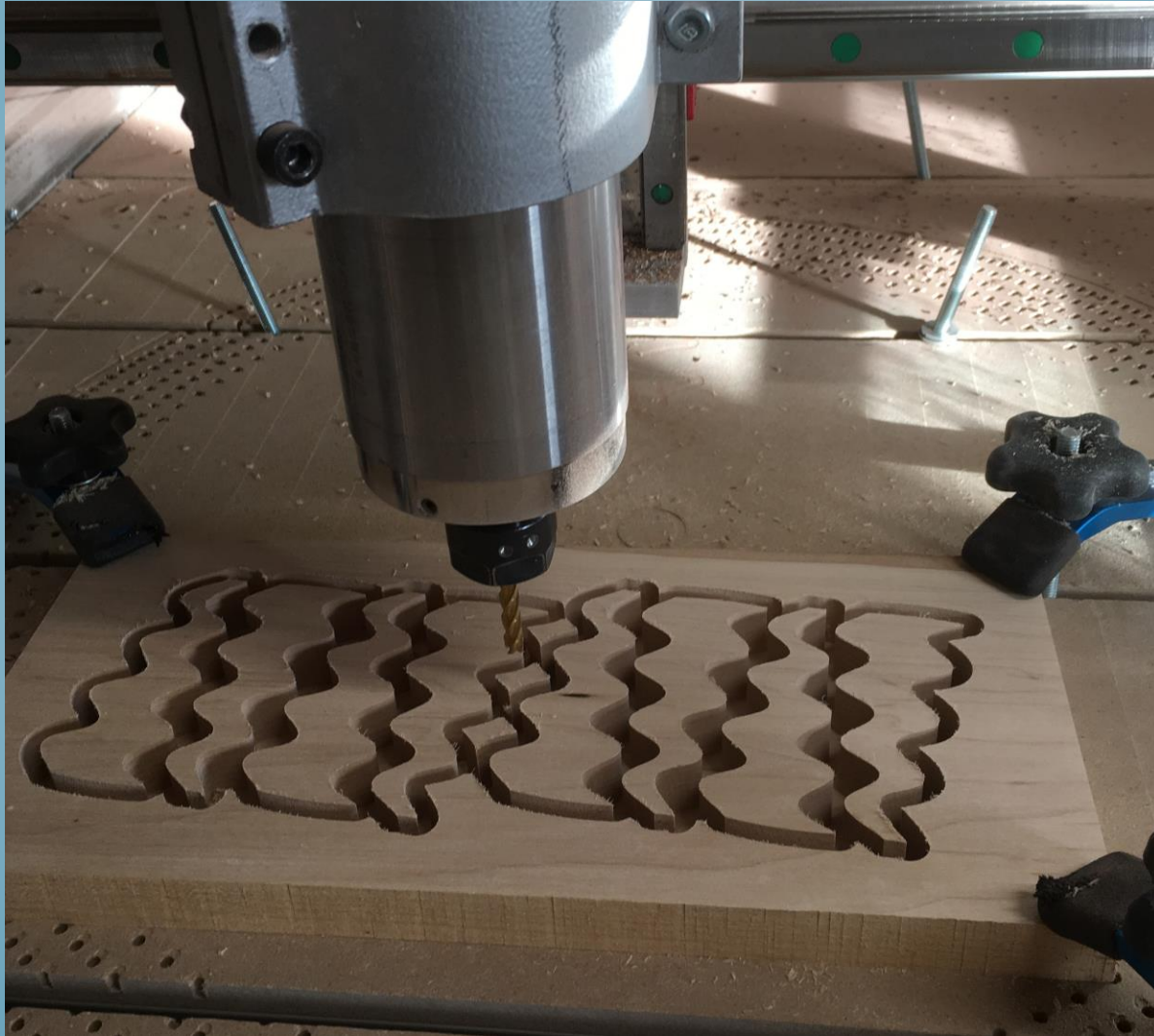
Cut Segments - Walnut



Check Fit



Cut Out Cherry Segments



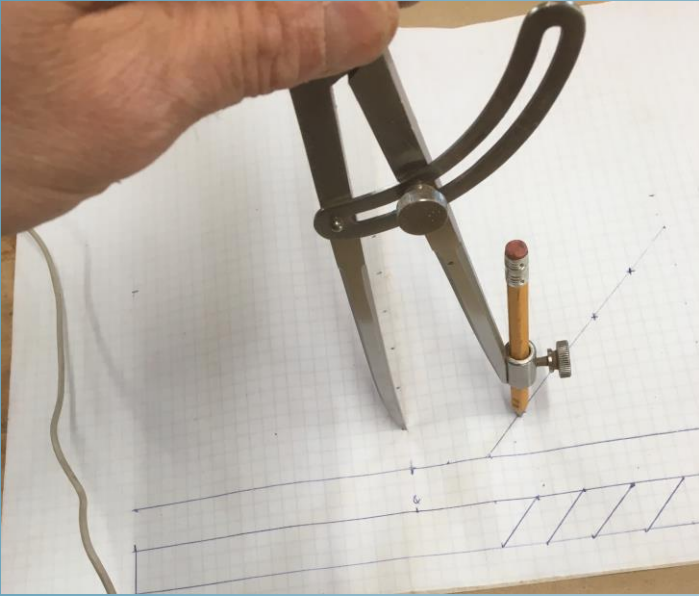
Check Fit



Glue Up



Design & Cut



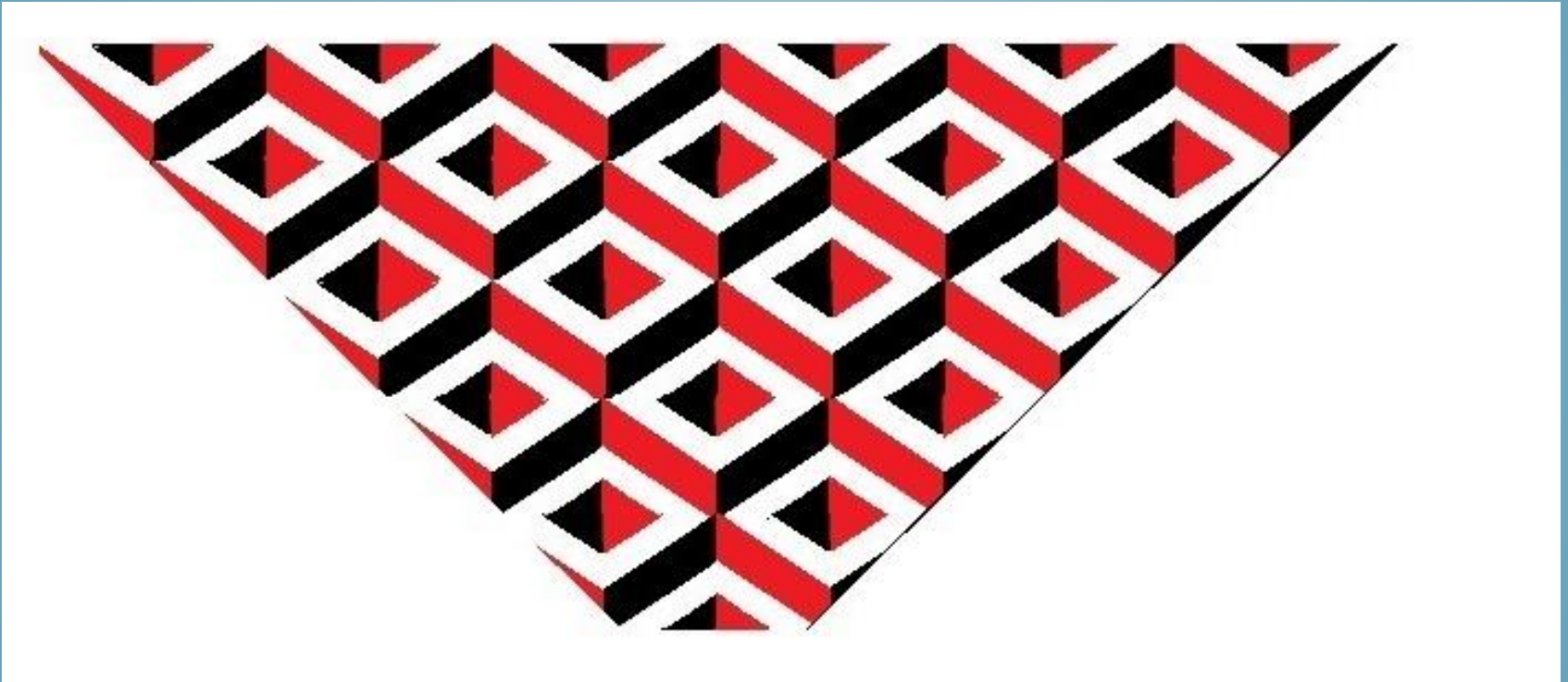
Build



Waves Complete



Boxes



Design



Board A
Board B



x 12



x 12



Make 6 pairs for Board A



Make 6 pairs for Board B



11/16" Wide
3/4" High

Black and Red strips 0.25" thick by 9" long and 12" wide

White strips 0.134" thick by 9" long and 12" wide

Make width around 12"

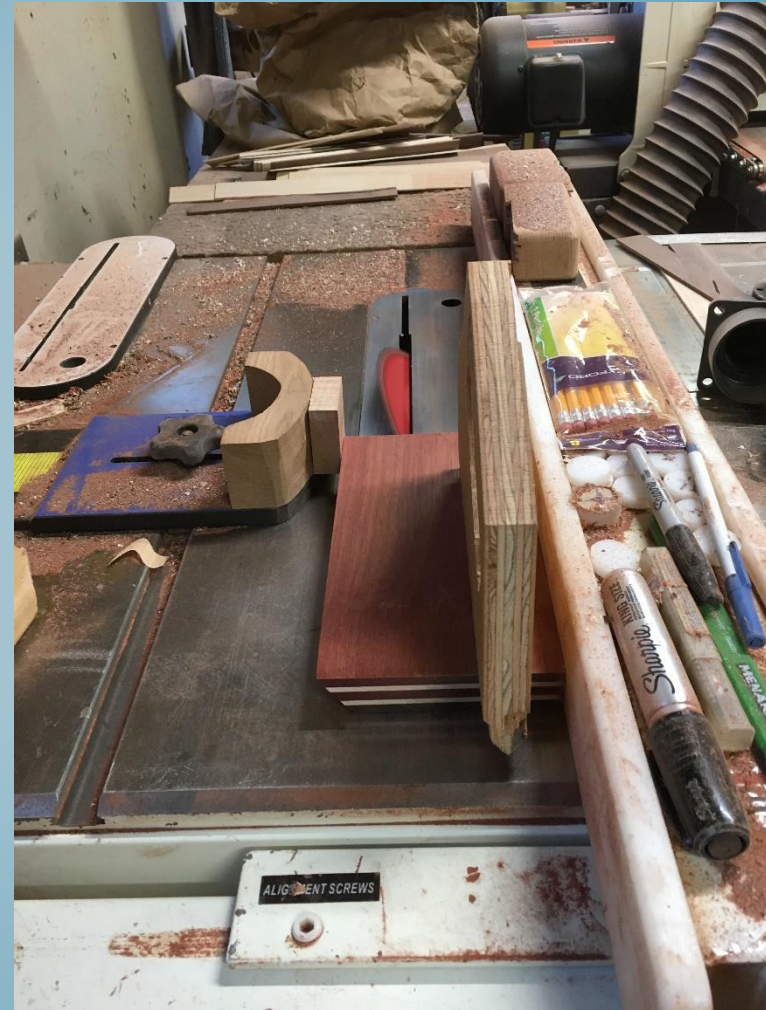


1.018"
Thick
(high)

Cut and Sand Strips



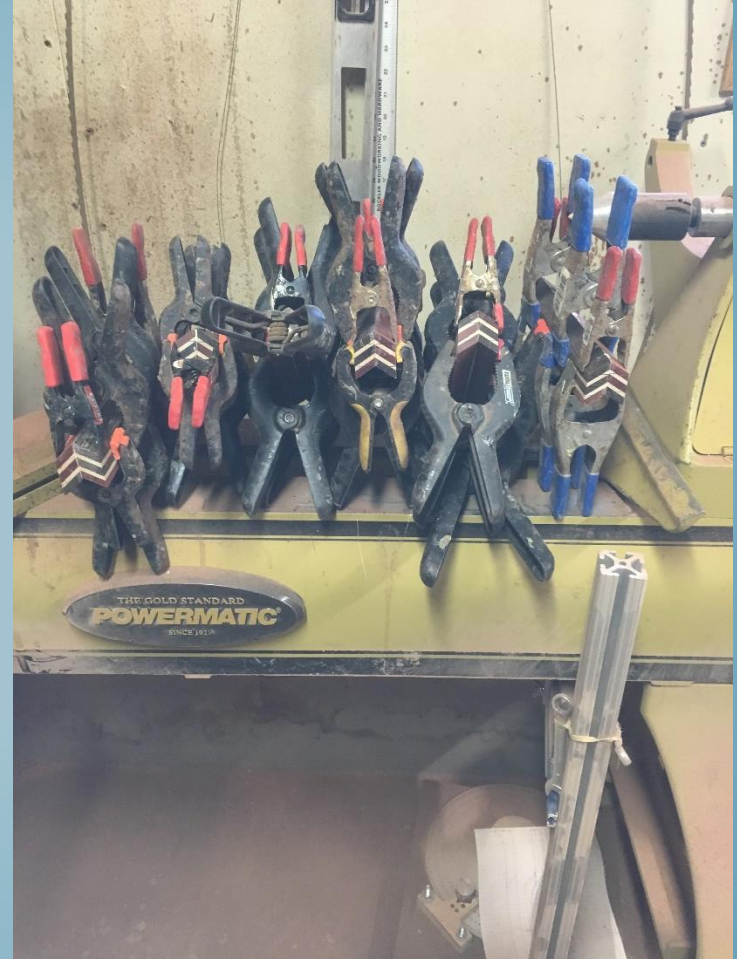
Glue Strips & Cut Stock



Sand Cut Stock To Size



Glue Together



Cut Stock



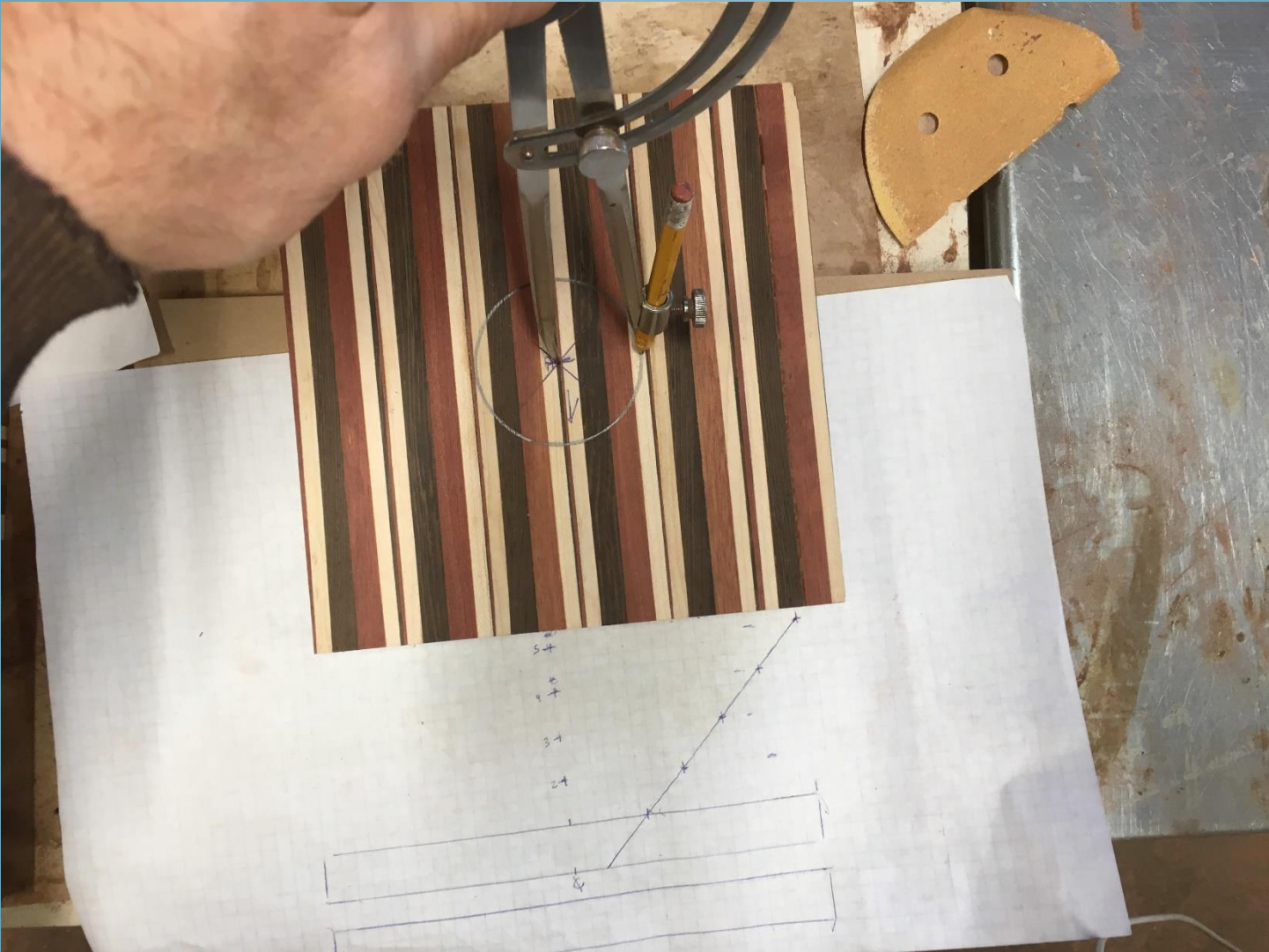
Glue Stock Pairs and Then Together



Check Pattern



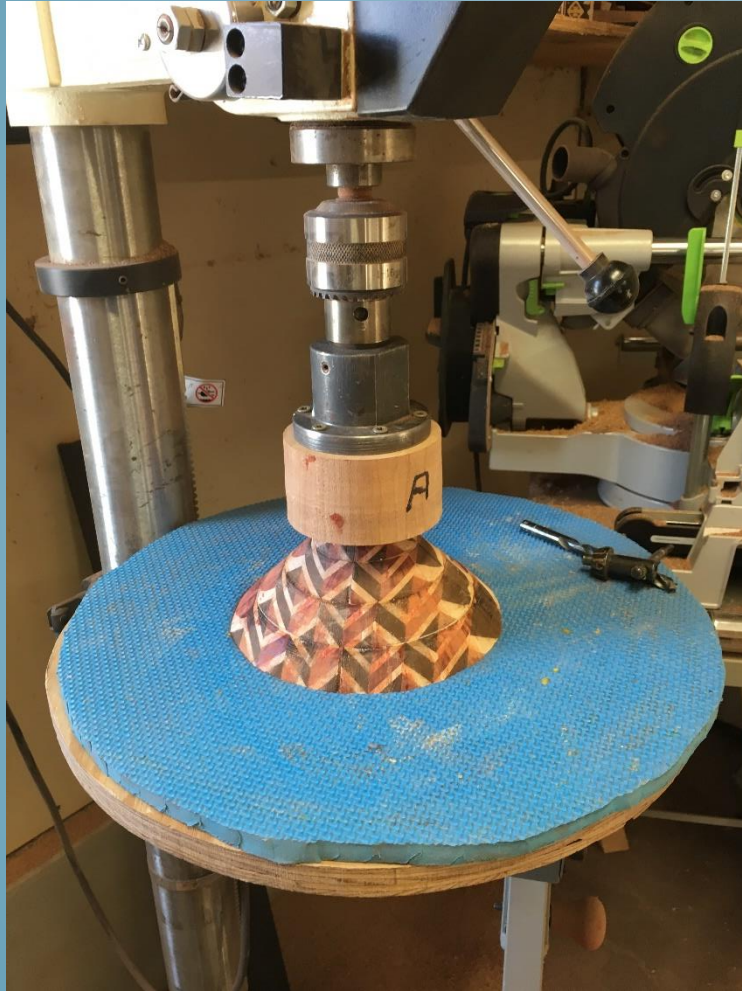
Design



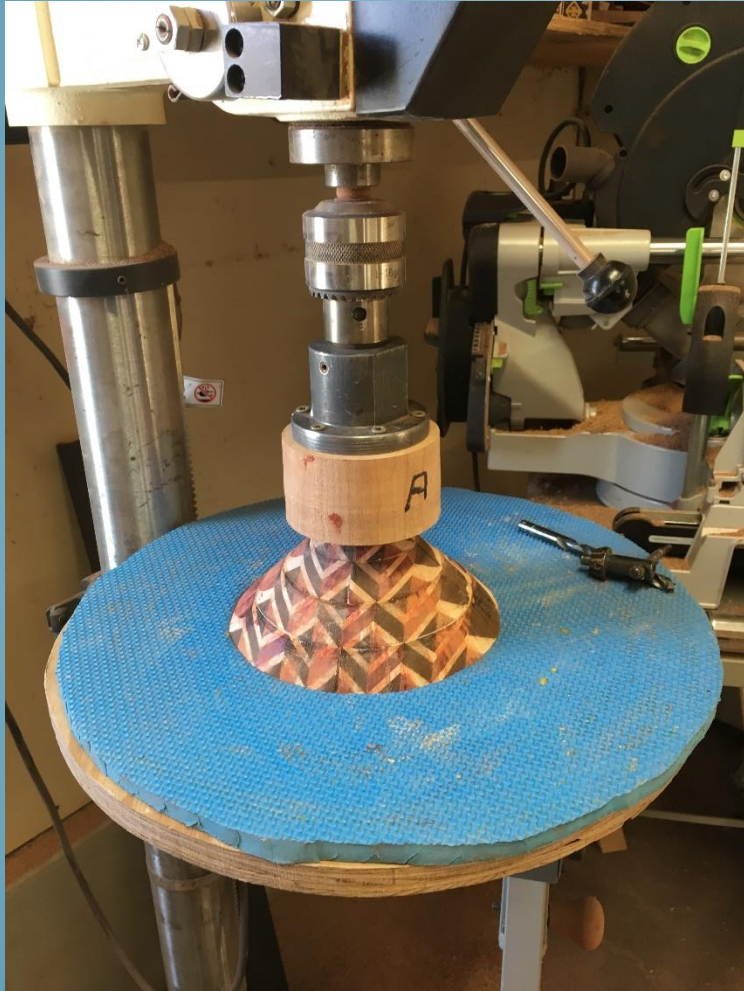
Build



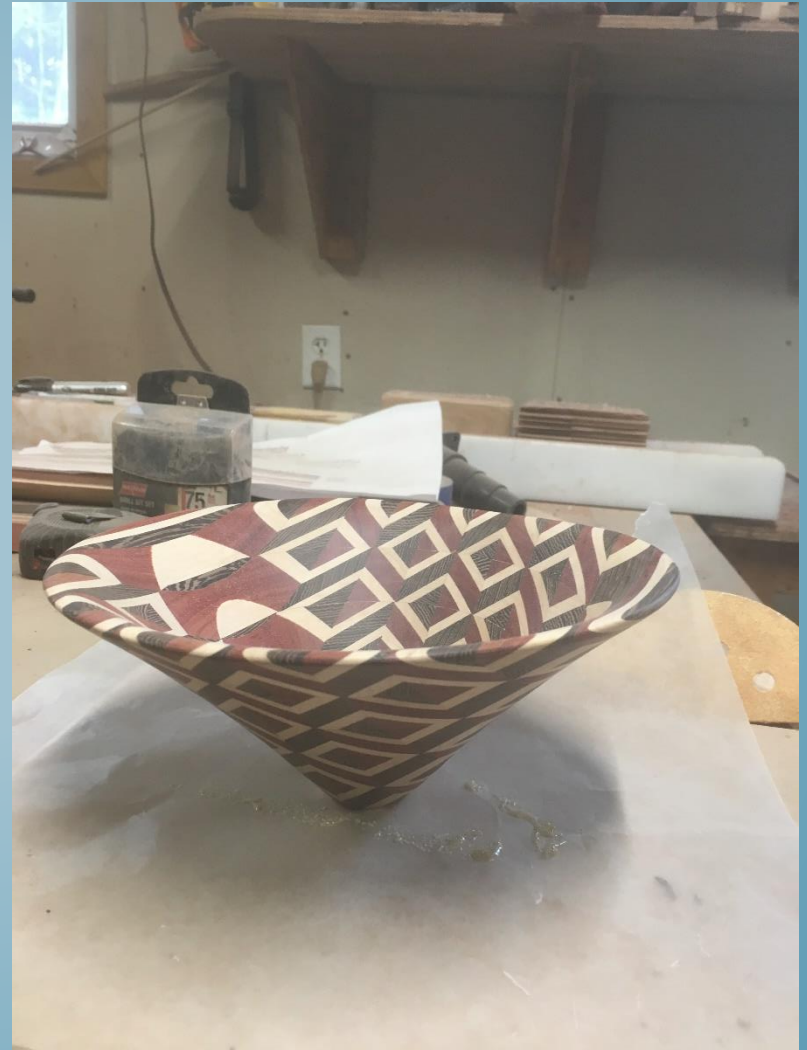
Build



Build



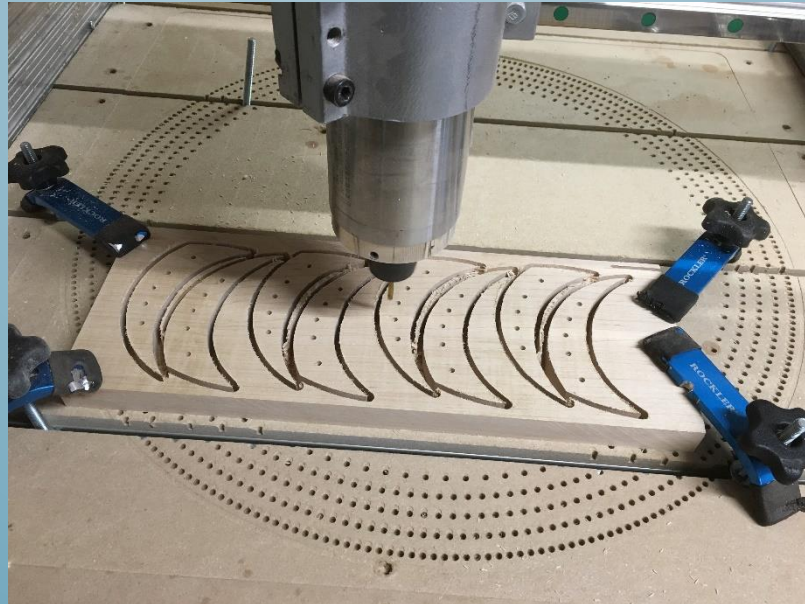
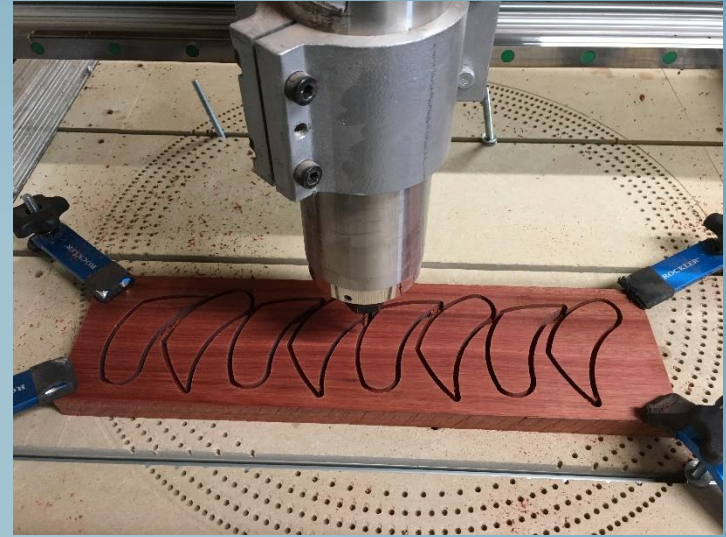
Boxes Complete



Colorful Fan



Cut Segments



Cut Segments



Sand Bottom of Board to Release Segments



Glue Segments Together



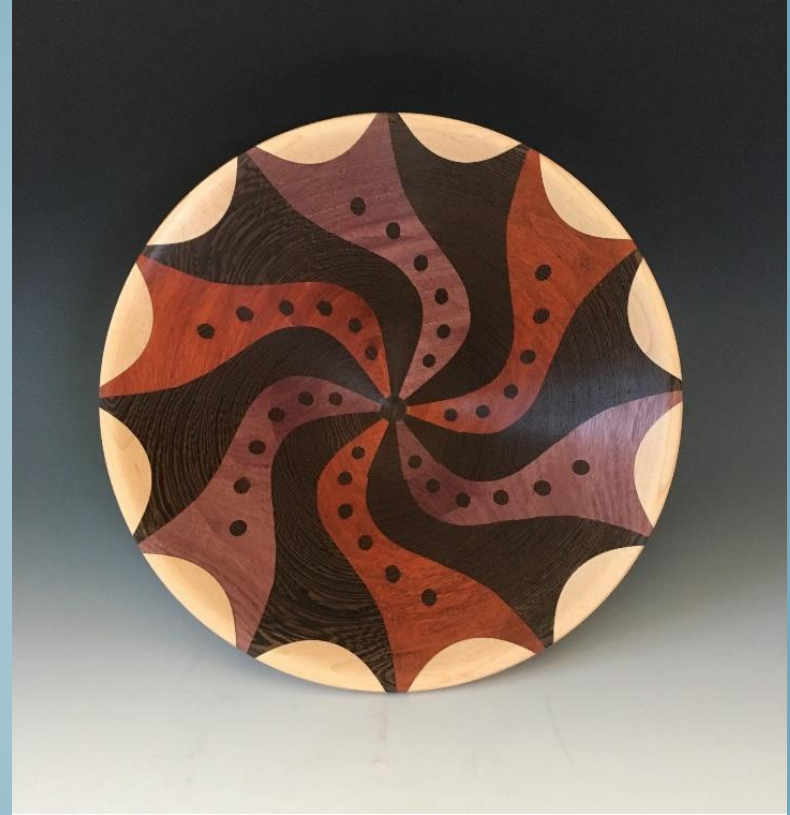
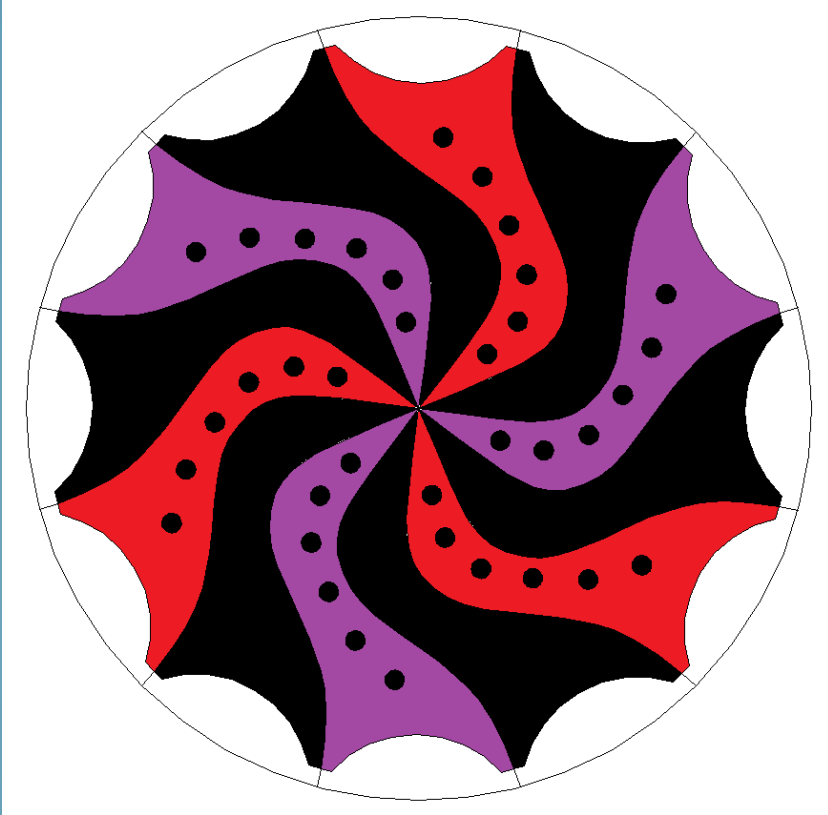
Build Bowl



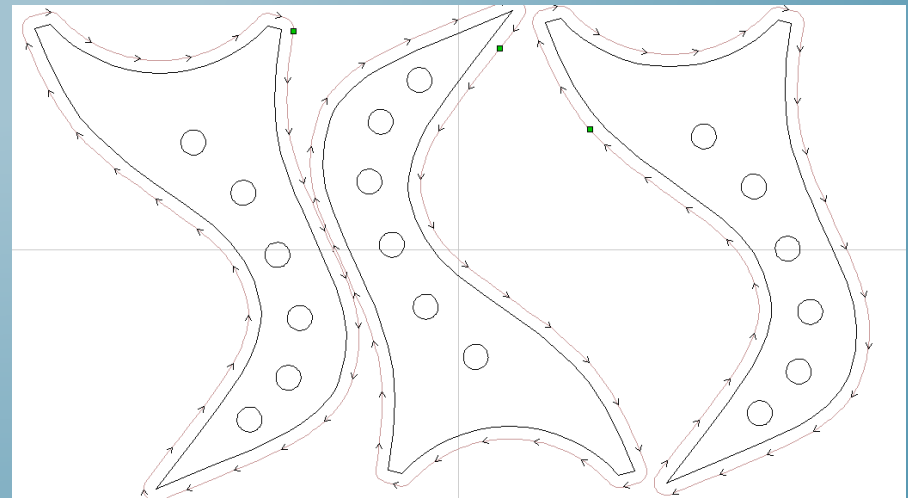
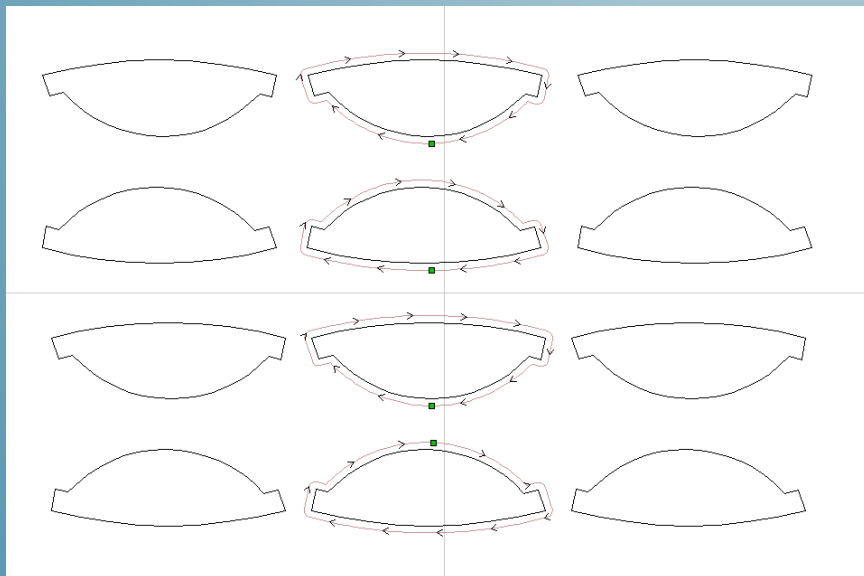
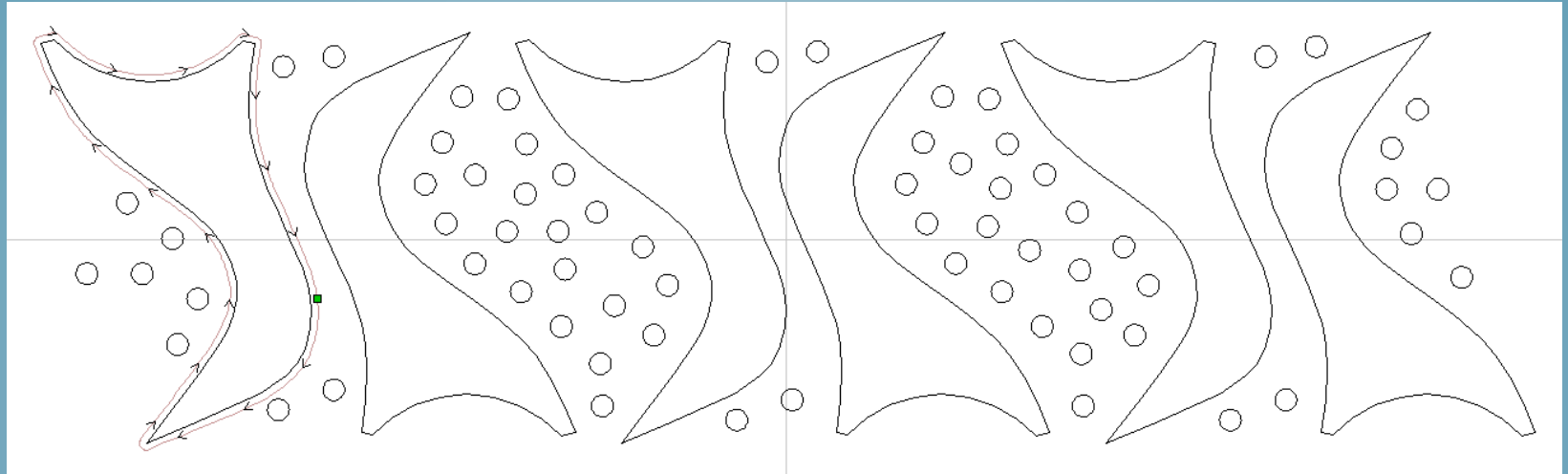
Complete



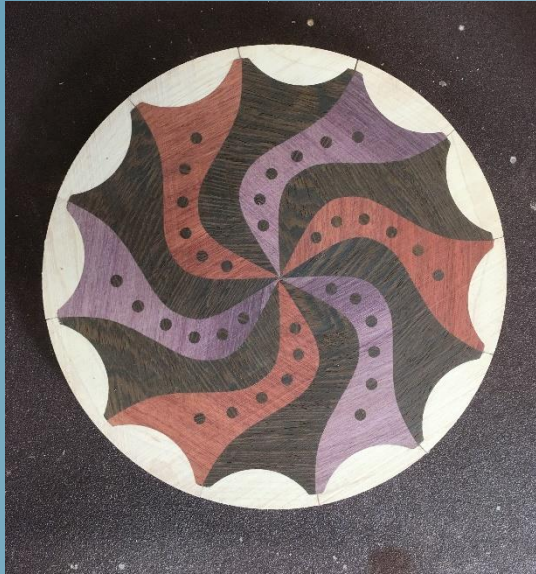
Tri-Circle



Tri-Circle



Tri-Circle



Inner Flower



Puzzled



Puzzled



Test Cut MDF



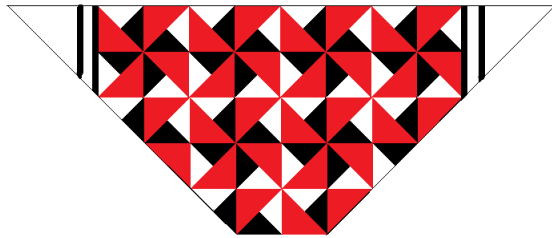
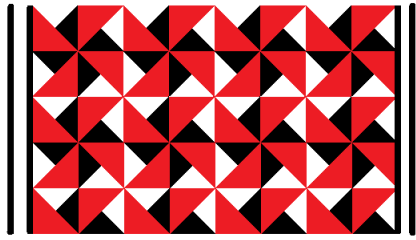
Puzzled




Puzzled



Pinwheel Design



Make 16 of these 

Make 4 pairs  Board A

Make 4 pairs  Board B

Board A 

Board B 

Basket Bowl



Diamonds And Boxes



Another Basket Bowl



Diamonds



Questions

Tom Lohman
Segmentedturning.org